

For Research Use Only

# Mitoferrin 1 Polyclonal antibody

Catalog Number: 26469-1-AP **12 Publications**



## Basic Information

<b>Catalog Number:</b> 26469-1-AP	<b>GenBank Accession Number:</b> BC132799	<b>Purification Method:</b> Antigen affinity purification
<b>Size:</b> 800 µg/ml	<b>GeneID (NCBI):</b> 51312	<b>Recommended Dilutions:</b> WB 1:500-1:3000 IHC 1:50-1:500
<b>Source:</b> Rabbit	<b>UNIPROT ID:</b> Q9NYZ2	
<b>Isotype:</b> IgG	<b>Full Name:</b> solute carrier family 25, member 37	
<b>Immunogen Catalog Number:</b> AG24876	<b>Observed MW:</b> 37 kDa	

## Applications

<b>Tested Applications:</b> IHC, WB, ELISA	<b>Positive Controls:</b>
<b>Cited Applications:</b> WB, IF, IHC	<b>WB:</b> L02 cells, mouse liver tissue, mouse spleen tissue, rat spleen tissue
<b>Species Specificity:</b> human, mouse, rat	<b>IHC:</b> human liver tissue,
<b>Cited Species:</b> human, rat, mouse	
<b>Note-IHC: suggested antigen retrieval with TE buffer pH 9.0; (*) Alternatively, antigen retrieval may be performed with citrate buffer pH 6.0</b>	

## Background Information

### Notable Publications

Author	Pubmed ID	Journal	Application
Peina Wang	36179435	Redox Biol	WB
Nunziata Maio	30765471	Haematologica	WB
Tong Zhang	35121990	Nat Cancer	WB,IHC

## Storage

**Storage:**  
Store at -20°C. Stable for one year after shipment.  
**Storage Buffer:**  
PBS with 0.02% sodium azide and 50% glycerol pH 7.3.  
Aliquoting is unnecessary for -20°C storage

For technical support and original validation data for this product please contact:

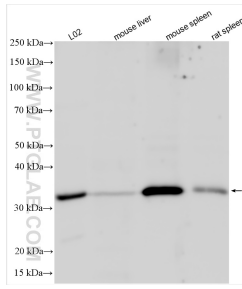
T: 4006900926

E: [Proteintech-CN@ptglab.com](mailto:Proteintech-CN@ptglab.com)

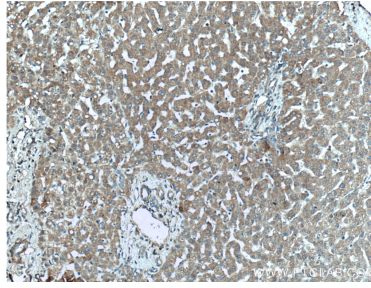
W: [ptgcn.com](http://ptgcn.com)

**This product is exclusively available under Proteintech Group brand and is not available to purchase from any other manufacturer.**

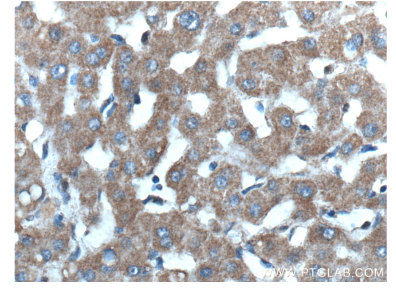
## Selected Validation Data



Various lysates were subjected to SDS PAGE followed by western blot with 26469-1-AP (Mitoferrin 1 antibody) at dilution of 1:1500 incubated at room temperature for 1.5 hours.



Immunohistochemical analysis of paraffin-embedded human liver tissue slide using 26469-1-AP (Mitoferrin 1 antibody) at dilution of 1:200 (under 10x lens).



Immunohistochemical analysis of paraffin-embedded human liver tissue slide using 26469-1-AP (Mitoferrin 1 antibody) at dilution of 1:200 (under 40x lens).