

For Research Use Only

GNB1L Polyclonal antibody

Catalog Number: 26484-1-AP



Basic Information

Catalog Number: 26484-1-AP	GenBank Accession Number: BC012060	Purification Method: Antigen affinity purification
Size: 450 µg/ml	GeneID (NCBI): 54584	Recommended Dilutions: WB 1:500-1:2000
Source: Rabbit	UNIPROT ID: Q9BYB4	
Isotype: IgG	Full Name: guanine nucleotide binding protein (G protein), beta polypeptide 1-like	
Immunogen Catalog Number: AG24391	Calculated MW: 327 aa, 36 kDa	
	Observed MW: 36 kDa, 18 kDa	

Applications

Tested Applications: WB, ELISA	Positive Controls: WB : A549 cells, Jurkat cells, MCF-7 cells
Species Specificity: human	

Background Information

GNB1L (G-protein subunit beta 1 like), located at 22q11.2, encodes a G-protein L-subunit-like polypeptide which is a member of the WD repeat protein family (PMID: 20538345). In humans, the hemizygous deletion of GNB1L can cause sensorimotor gating defects, which are related to schizophrenia and other serious mental diseases (PMID: 32847500). Moreover, GNB1L is a key regulator of DDR signaling via its role as a co-chaperone specifically regulating PIKK proteins (PMID: 37541219). GNB1L has 2 isoforms 36 kDa and 22 kDa, about 22 kDa which may be produced by Alternative splicing.

Storage

Storage:
Store at -20°C. Stable for one year after shipment.
Storage Buffer:
PBS with 0.02% sodium azide and 50% glycerol pH 7.3.
Aliquoting is unnecessary for -20°C storage

For technical support and original validation data for this product please contact:

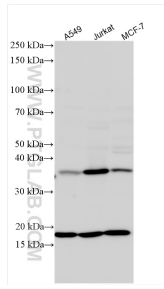
T: 4006900926

E: Proteintech-CN@ptglab.com

W: ptgcn.com

This product is exclusively available under Proteintech Group brand and is not available to purchase from any other manufacturer.

Selected Validation Data



Various lysates were subjected to SDS PAGE followed by western blot with 26484-1-AP (GNB1L antibody) at dilution of 1:1000 incubated at room temperature for 1.5 hours.