

For Research Use Only

Parvalbumin Polyclonal antibody

Catalog Number: 26521-1-AP **8 Publications**



Basic Information

Catalog Number: 26521-1-AP	GenBank Accession Number: NM_002854	Purification Method: Antigen affinity purification
Size: 750 µg/ml	GeneID (NCBI): 5816	Recommended Dilutions: IHC 1:50-1:500
Source: Rabbit	UNIPROT ID: P20472	
Isotype: IgG	Full Name: parvalbumin	
	Calculated MW: 12 kDa	
	Observed MW: 12 kDa	

Applications

Tested Applications: IHC, ELISA	Positive Controls: IHC : human brain tissue, mouse brain tissue, human cerebellum tissue
Cited Applications: WB, IF, IHC	
Species Specificity: human, mouse	
Cited Species: human, rat, mouse, pig	
Note-IHC: suggested antigen retrieval with TE buffer pH 9.0; (*) Alternatively, antigen retrieval may be performed with citrate buffer pH 6.0	

Background Information

PVALB is a high affinity calcium ion-binding protein that is structurally and functionally similar to calmodulin and troponin C. PVALB is expressed in high levels only in fast-contracting muscles and at lower levels in brain and several endocrine tissues. It is thought to be involved in muscle relaxation.

Notable Publications

Author	Pubmed ID	Journal	Application
Nagakatsu Harada	32451822	J Muscle Res Cell Motil	WB
Xinhua Hou	32480263	Food Chem	WB
Cornelius Mueller-Buehl	35721494	Front Cell Dev Biol	WB

Storage

Storage:
Store at -20°C. Stable for one year after shipment.
Storage Buffer:
PBS with 0.02% sodium azide and 50% glycerol pH 7.3.
Aliquoting is unnecessary for -20°C storage

For technical support and original validation data for this product please contact:

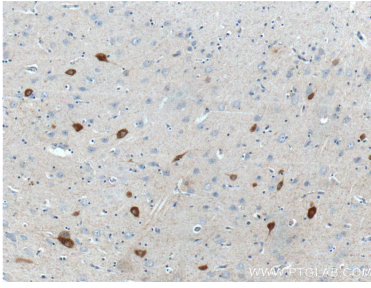
T: 4006900926

E: Proteintech-CN@ptglab.com

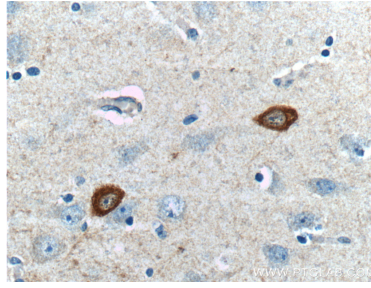
W: ptgcn.com

This product is exclusively available under Proteintech Group brand and is not available to purchase from any other manufacturer.

Selected Validation Data



Immunohistochemical analysis of paraffin-embedded human brain tissue slide using 26521-1-AP (Parvalbumin antibody at dilution of 1:200 (under 10x lens).



Immunohistochemical analysis of paraffin-embedded human brain tissue slide using 26521-1-AP (Parvalbumin antibody at dilution of 1:200 (under 40x lens).