

For Research Use Only

# BCAM Polyclonal antibody

Catalog Number: 26528-1-AP



## Basic Information

Catalog Number:

26528-1-AP

Size:

800 µg/ml

Source:

Rabbit

Isotype:

IgG

Immunogen Catalog Number:

AG24753

GenBank Accession Number:

BC050450

GeneID (NCBI):

4059

UNIPROT ID:

P50895

Full Name:

basal cell adhesion molecule  
(Lutheran blood group)

Calculated MW:

67 kDa

Observed MW:

78 kDa, 85 kDa

Purification Method:

Antigen affinity purification

Recommended Dilutions:

WB 1:2000-1:16000

## Applications

Tested Applications:

WB, ELISA

Species Specificity:

human

Positive Controls:

WB: A431 cells, HT-29 cells, human placenta tissue

## Background Information

Basal cell adhesion molecule (Lu/BCAM) is a 90 kDa membrane-bound glycoprotein of the immunoglobulin superfamily (IgSF), functioning as a receptor for the extracellular matrix protein, laminin. BCAM, involved in cell adhesion and migration, can also promote tumor metastasis and has been elucidated to play a functional role in the metastasis of thyroid cancer and gastric cancer (PMID: 35941663). Two Lu/BCAM glycoprotein (gp) isoforms are present on human RBCs, Lu (85 kDa) and Lu(v13) (78 kDa); they result from the alternative splicing of intron 13 and differ by the lengths of their cytoplasmic domains (PMID: 23160466).

## Storage

Storage:

Store at -20°C. Stable for one year after shipment.

Storage Buffer:

PBS with 0.02% sodium azide and 50% glycerol pH 7.3.

Aliquoting is unnecessary for -20°C storage

For technical support and original validation data for this product please contact:

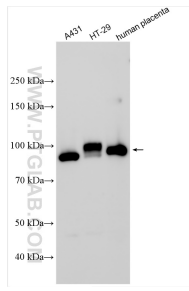
T: 4006900926

E: [Proteintech-CN@ptglab.com](mailto:Proteintech-CN@ptglab.com)

W: [ptgcn.com](http://ptgcn.com)

This product is exclusively available under Proteintech Group brand and is not available to purchase from any other manufacturer.

## Selected Validation Data



Various lysates were subjected to SDS PAGE followed by western blot with 26528-1-AP (BCAM antibody) at dilution of 1:8000 incubated at room temperature for 1.5 hours.