

For Research Use Only

# XYLB Polyclonal antibody

Catalog Number: 26541-1-AP



## Basic Information

<b>Catalog Number:</b> 26541-1-AP	<b>GenBank Accession Number:</b> BC137076	<b>Purification Method:</b> Antigen affinity purification
<b>Size:</b> 600 µg/ml	<b>GeneID (NCBI):</b> 9942	<b>Recommended Dilutions:</b> WB 1:500-1:1000 IHC 1:100-1:400
<b>Source:</b> Rabbit	<b>UNIPROT ID:</b> O75191	
<b>Isotype:</b> IgG	<b>Full Name:</b> xylulokinase homolog (H. influenzae)	
<b>Immunogen Catalog Number:</b> AG19208	<b>Calculated MW:</b> 536 aa, 58 kDa	
	<b>Observed MW:</b> 43 kDa	

## Applications

**Tested Applications:**  
IHC, WB, ELISA

**Species Specificity:**  
human

**Note-IHC: suggested antigen retrieval with TE buffer pH 9.0; (\*) Alternatively, antigen retrieval may be performed with citrate buffer pH 6.0**

**Positive Controls:**

WB : A431 cells,

IHC : human skin cancer tissue,

## Background Information

Human xylulokinase-like protein (XYLB), is a 58 kDa protein belongs to a family of enzymes that include fucokinase, gluconokinase, glycerokinase and xylulokinase. XYLB is a key regulator for controlling metabolic disease. XYLB also plays important roles in energy metabolism. XYLB has 2 isoforms produced by alternative splicing with the MW of 58 and 43 kDa.

## Storage

**Storage:**

Store at -20°C. Stable for one year after shipment.

**Storage Buffer:**

PBS with 0.02% sodium azide and 50% glycerol pH 7.3.

Aliquoting is unnecessary for -20°C storage

For technical support and original validation data for this product please contact:

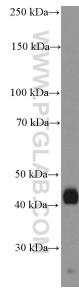
T: 4006900926

E: Proteintech-CN@ptglab.com

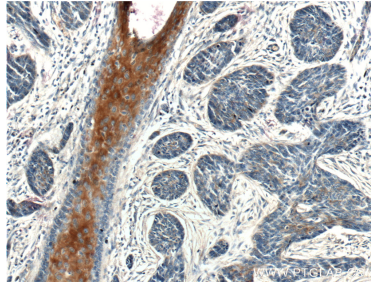
W: ptgcn.com

**This product is exclusively available under Proteintech Group brand and is not available to purchase from any other manufacturer.**

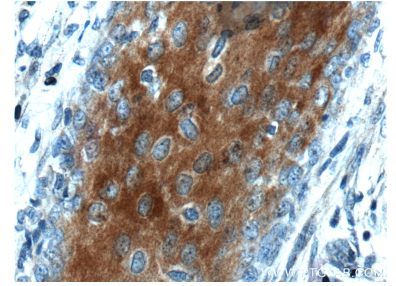
## Selected Validation Data



A431 cells were subjected to SDS PAGE followed by western blot with 26541-1-AP (XYLB Antibody) at dilution of 1:600 incubated at room temperature for 1.5 hours.



Immunohistochemical analysis of paraffin-embedded human skin cancer tissue slide using 26541-1-AP (XYLB Antibody) at dilution of 1:200 (under 10x lens).



Immunohistochemical analysis of paraffin-embedded human skin cancer tissue slide using 26541-1-AP (XYLB Antibody) at dilution of 1:200 (under 40x lens).