

For Research Use Only

ELOVL5 Polyclonal antibody

Catalog Number: 26599-1-AP

Featured Product



Basic Information

Catalog Number:

26599-1-AP

Size:

550 µg/ml

Source:

Rabbit

Isotype:

IgG

Immunogen Catalog Number:

AG24786

GenBank Accession Number:

BC017270

GeneID (NCBI):

60481

UNIPROT ID:

Q9NYP7

Full Name:

ELOVL family member 5, elongation of long chain fatty acids (FEN1/Elo2, SUR4/Elo3-like, yeast)

Calculated MW:

299 aa, 35 kDa

Observed MW:

25 kDa

Purification Method:

Antigen affinity purification

Recommended Dilutions:

WB 1:1000-1:6000

IHC 1:50-1:500

IF/ICC 1:50-1:500

Applications

Tested Applications:

WB, IF/ICC, IHC, ELISA

Species Specificity:

human, mouse, rat

Note-IHC: suggested antigen retrieval with TE buffer pH 9.0; (*) Alternatively, antigen retrieval may be performed with citrate buffer pH 6.0

Positive Controls:

WB: HeLa cells, MCF-7 cells, mouse kidney tissue, rat kidney tissue

IHC: mouse liver tissue,

IF/ICC: HepG2 cells, HeLa cells

Background Information

Very long-chain fatty acid elongase 5 (ELOVL5) is a key enzyme for the endogenous synthesis of long-chain unsaturated fatty acids. A critical role of ELOVL5 in elongating fatty acid substrates ranging from 16 to 20 carbons was reported in humans and rodents (PMID: 29454701). ELOVL5 is involved in metastasis through lipid droplets-regulated TGF-β receptor expression and is a predictive biomarker of metastatic ER+ breast cancer (PMID: 36056008). Western blot analysis detected ELOVL51 at an apparent molecular mass of ~25 kDa (PMID: 36056008, 32527375).

Storage

Storage:

Store at -20°C. Stable for one year after shipment.

Storage Buffer:

PBS with 0.02% sodium azide and 50% glycerol pH 7.3.

Aliquoting is unnecessary for -20°C storage

For technical support and original validation data for this product please contact:

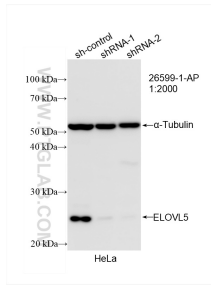
T: 4006900926

E: Proteintech-CN@ptglab.com

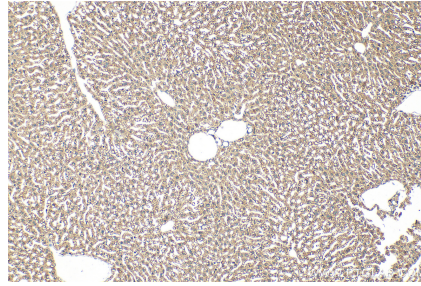
W: ptgcn.com

This product is exclusively available under Proteintech Group brand and is not available to purchase from any other manufacturer.

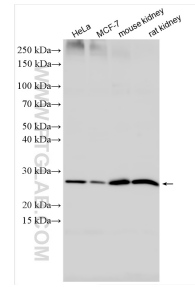
Selected Validation Data



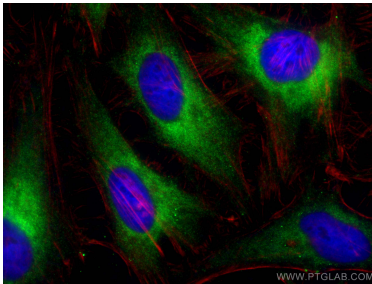
WB result of ELOVL5 antibody (26599-1-AP; 1:2000; incubated at room temperature for 1.5 hours) with sh-Control and sh-ELOVL5 transfected HeLa cells.



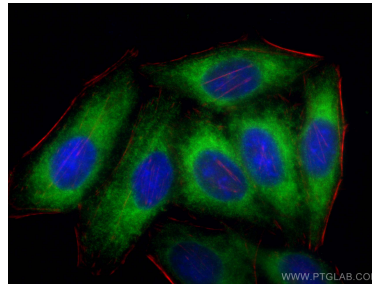
Immunohistochemical analysis of paraffin-embedded mouse liver tissue slide using 26599-1-AP (ELOVL5 antibody) at dilution of 1:200 (under 10x lens). Heat mediated antigen retrieval with Tris-EDTA buffer (pH 9.0).



Various lysates were subjected to SDS PAGE followed by western blot with 26599-1-AP (ELOVL5 antibody) at dilution of 1:3000 incubated at room temperature for 1.5 hours.



Immunofluorescent analysis of (-20°C Ethanol) fixed HeLa cells using ELOVL5 antibody (26599-1-AP) at dilution of 1:200 and CoraLite@488-Conjugated AffiniPure Goat Anti-Rabbit IgG(H+L) (SA00013-2), CL594-phalloidin (red).



Immunofluorescent analysis of (-20°C Ethanol) fixed HepG2 cells using ELOVL5 antibody (26599-1-AP) at dilution of 1:200 and CoraLite@488-Conjugated AffiniPure Goat Anti-Rabbit IgG(H+L) (SA00013-2), CL594-phalloidin (red).