

For Research Use Only

CLRN1 Polyclonal antibody

Catalog Number: 26630-1-AP **1 Publications**



Basic Information

Catalog Number: 26630-1-AP	GenBank Accession Number: BC074970	Purification Method: Antigen affinity purification
Size: 1000 µg/ml	GeneID (NCBI): 7401	Recommended Dilutions: WB 1:500-1:2000 IHC 1:50-1:500
Source: Rabbit	UNIPROT ID: P58418	
Isotype: IgG	Full Name: clarin 1	
Immunogen Catalog Number: AG24289	Calculated MW: 232 aa, 26 kDa	
	Observed MW: 23 kDa, 27 kDa	

Applications

Tested Applications: IHC, WB, ELISA	Positive Controls: WB : HeLa cells, IHC : mouse testis tissue, mouse kidney tissue
Cited Applications: WB	
Species Specificity: human, mouse	
Cited Species: human, mouse	
Note-IHC: suggested antigen retrieval with TE buffer pH 9.0; (*) Alternatively, antigen retrieval may be performed with citrate buffer pH 6.0	

Background Information

Notable Publications

Author	Pubmed ID	Journal	Application
Lei Xu	31625146	J Pathol	WB

Storage

Storage:
Store at -20°C. Stable for one year after shipment.
Storage Buffer:
PBS with 0.02% sodium azide and 50% glycerol pH 7.3.
Aliquoting is unnecessary for -20°C storage

For technical support and original validation data for this product please contact:

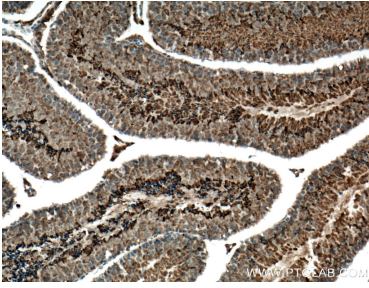
T: 4006900926

E: Proteintech-CN@ptglab.com

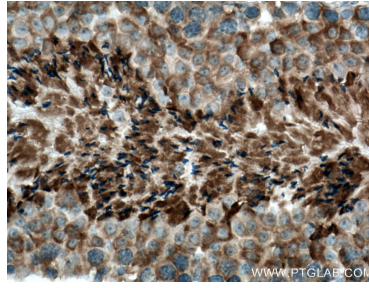
W: ptgcn.com

This product is exclusively available under Proteintech Group brand and is not available to purchase from any other manufacturer.

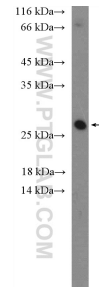
Selected Validation Data



Immunohistochemical analysis of paraffin-embedded mouse testis tissue slide using 26630-1-AP (CLRN1 antibody) at dilution of 1:200 (under 10x lens). Heat mediated antigen retrieval with Tris-EDTA buffer (pH 9.0).



Immunohistochemical analysis of paraffin-embedded mouse testis tissue slide using 26630-1-AP (CLRN1 antibody) at dilution of 1:200 (under 40x lens). Heat mediated antigen retrieval with Tris-EDTA buffer (pH 9.0).



HeLa cells were subjected to SDS PAGE followed by western blot with 26630-1-AP (CLRN1 Antibody) at dilution of 1:1000 incubated at room temperature for 1.5 hours.