

For Research Use Only

# REEP4 Polyclonal antibody

Catalog Number: 26650-1-AP **5 Publications**



## Basic Information

<b>Catalog Number:</b> 26650-1-AP	<b>GenBank Accession Number:</b> BC013048	<b>Purification Method:</b> Antigen affinity purification
<b>Size:</b> 700 ug/ml	<b>GeneID (NCBI):</b> 80346	<b>Recommended Dilutions:</b> WB 1:500-1:1000 IHC 1:50-1:500 IF/ICC 1:50-1:500
<b>Source:</b> Rabbit	<b>UNIPROT ID:</b> Q9H6H4	
<b>Isotype:</b> IgG	<b>Full Name:</b> receptor accessory protein 4	
<b>Immunogen Catalog Number:</b> AG24569	<b>Calculated MW:</b> 29 kDa	
	<b>Observed MW:</b> 29 kDa	

## Applications

<b>Tested Applications:</b> WB, IHC, IF/ICC, ELISA	<b>Positive Controls:</b> WB : mouse testis tissue, rat testis tissue IHC : human testis tissue, IF/ICC : HeLa cells,
<b>Cited Applications:</b> WB, IHC, IF	
<b>Species Specificity:</b> human, mouse, rat	
<b>Cited Species:</b> human, mouse	
<b>Note-IHC: suggested antigen retrieval with TE buffer pH 9.0; (*) Alternatively, antigen retrieval may be performed with citrate buffer pH 6.0</b>	

## Background Information

### Notable Publications

Author	Pubmed ID	Journal	Application
Peng-Peng Zhu	35348668	Hum Mol Genet	WB
Pengli Zheng	34912111	Nature	WB
Zixuan Chen	38947393	J Cancer	WB

## Storage

**Storage:**  
Store at -20°C. Stable for one year after shipment.  
**Storage Buffer:**  
PBS with 0.02% sodium azide and 50% glycerol pH 7.3.  
Aliquoting is unnecessary for -20°C storage

For technical support and original validation data for this product please contact:

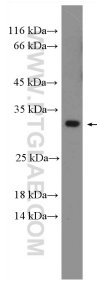
T: 4006900926

E: Proteintech-CN@ptglab.com

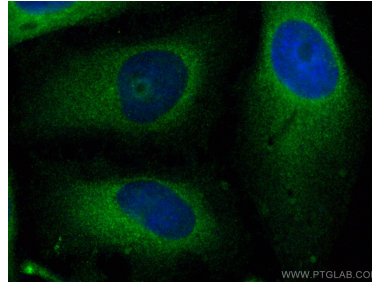
W: ptgcn.com

**This product is exclusively available under Proteintech Group brand and is not available to purchase from any other manufacturer.**

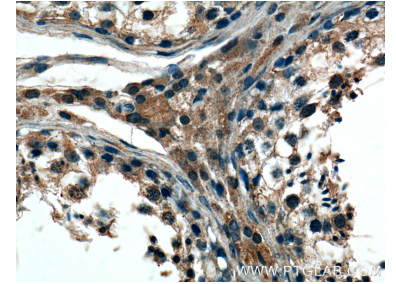
## Selected Validation Data



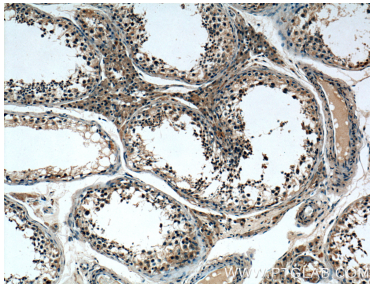
mouse testis tissue were subjected to SDS PAGE followed by western blot with 26650-1-AP (REEP4 Antibody) at dilution of 1:600 incubated at room temperature for 1.5 hours.



Immunofluorescent analysis of (-20°C Methanol) fixed HeLa cells using REEP4 antibody (26650-1-AP) at dilution of 1:200 and CoraLite® 488-Conjugated AffiniPure Goat Anti-Rabbit IgG(H+L) (SA00013-2).



Immunohistochemical analysis of paraffin-embedded human testis tissue slide using 26650-1-AP (REEP4 Antibody) at dilution of 1:200 (under 40x lens).



Immunohistochemical analysis of paraffin-embedded human testis tissue slide using 26650-1-AP (REEP4 Antibody) at dilution of 1:200 (under 10x lens).