

For Research Use Only

SLC25A29 Polyclonal antibody

Catalog Number: 26663-1-AP **1 Publications**



Basic Information

| | | |
|---|--|--|
| Catalog Number: 26663-1-AP | GenBank Accession Number: BC132966 | Purification Method: Antigen affinity purification |
| Size: 300 µg/ml | GeneID (NCBI): 123096 | Recommended Dilutions: WB 1:500-1:1000 IHC 1:50-1:500 |
| Source: Rabbit | UNIPROT ID: Q8N8R3 | |
| Isotype: IgG | Full Name: solute carrier family 25, member 29 | |
| Immunogen Catalog Number: AG24662 | Calculated MW: 303 aa, 32 kDa | |
| | Observed MW: 32 kDa | |

Applications

| | |
|--|--|
| Tested Applications: IHC, WB, ELISA | Positive Controls: WB : mouse brain tissue, rat brain tissue IHC : human pancreas tissue, |
| Cited Applications: WB | |
| Species Specificity: human, mouse, rat | |
| Cited Species: human | |
| Note-IHC: suggested antigen retrieval with TE buffer pH 9.0; (*) Alternatively, antigen retrieval may be performed with citrate buffer pH 6.0 | |

Background Information

Notable Publications

| Author | Pubmed ID | Journal | Application |
|---------------|-----------|-----------------|-------------|
| Pengdou Zheng | 37775731 | Cancer Cell Int | WB |

Storage

Storage:
Store at -20°C. Stable for one year after shipment.
Storage Buffer:
PBS with 0.02% sodium azide and 50% glycerol pH 7.3.
Aliquoting is unnecessary for -20°C storage

For technical support and original validation data for this product please contact:

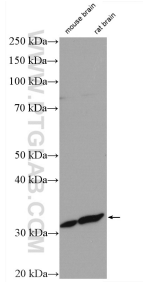
T: 4006900926

E: Proteintech-CN@ptglab.com

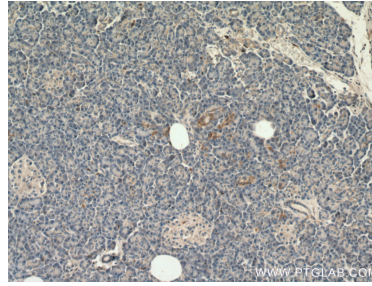
W: ptgcn.com

This product is exclusively available under Proteintech Group brand and is not available to purchase from any other manufacturer.

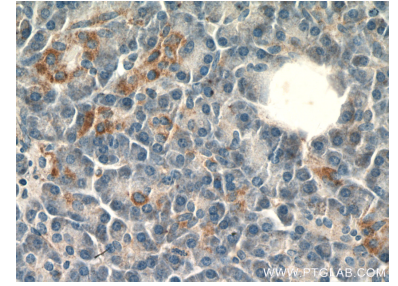
Selected Validation Data



Various lysates were subjected to SDS PAGE followed by western blot with 26663-1-AP (SLC25A29 antibody) at dilution of 1:800 incubated at room temperature for 1.5 hours.



Immunohistochemical analysis of paraffin-embedded human pancreas tissue slide using 26663-1-AP (SLC25A29 antibody) at dilution of 1:200 (under 10x lens).



Immunohistochemical analysis of paraffin-embedded human pancreas tissue slide using 26663-1-AP (SLC25A29 antibody) at dilution of 1:200 (under 40x lens).