

For Research Use Only

SLC6A6/TAUT Polyclonal antibody

Catalog Number: 26725-1-AP



Basic Information

Catalog Number:

26725-1-AP

Size:

450 µg/ml

Source:

Rabbit

Isotype:

IgG

Immunogen Catalog Number:

AG24935

GenBank Accession Number:

BC137128

GeneID (NCBI):

6533

UNIPROT ID:

P31641

Full Name:

solute carrier family 6
(neurotransmitter transporter,
taurine), member 6

Observed MW:

70 kDa

Purification Method:

Antigen affinity purification

Recommended Dilutions:

WB 1:500-1:2000

IHC 1:50-1:500

Applications

Tested Applications:

IHC, WB, ELISA

Species Specificity:

mouse, rat, human

**Note-IHC: suggested antigen retrieval with
TE buffer pH 9.0; (*) Alternatively, antigen
retrieval may be performed with citrate
buffer pH 6.0**

Positive Controls:

WB: mouse eye tissue,

IHC: rat eye tissue,

Background Information

SLC6A6, also known as TAUT, belongs to the solute carrier 6 (SLC6) family. SLC6A6 is expressed in retinal capillary endothelial cells and mediates the transport of taurine. SLC6A6 can also mediate the transport of beta-alanine, hypotaurine, and gamma-aminobutyric acid. SLC6A6 has 2 isoforms with the molecular mass of 23 and 70 kDa. Sometimes bands of 50 (non-glycosylated) and 75 kDa (glycosylated) may be detected refer to literature (PMID: 35050188).

Storage

Storage:

Store at -20°C. Stable for one year after shipment.

Storage Buffer:

PBS with 0.02% sodium azide and 50% glycerol pH 7.3.

Aliquoting is unnecessary for -20°C storage

For technical support and original validation data for this product please contact:

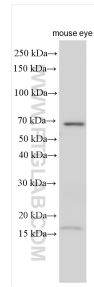
T: 4006900926

E: Proteintech-CN@ptglab.com

W: ptgcn.com

This product is exclusively available under Proteintech Group brand and is not available to purchase from any other manufacturer.

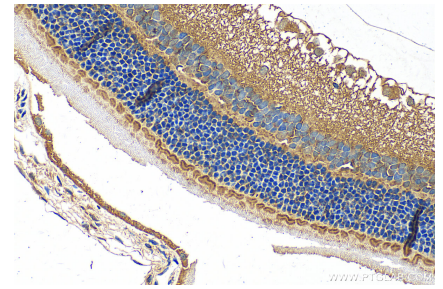
Selected Validation Data



mouse eye tissue were subjected to SDS PAGE followed by western blot with 26725-1-AP (SLC6A6/TAUT antibody) at dilution of 1:1000 incubated at room temperature for 1.5 hours.



Immunohistochemical analysis of paraffin-embedded rat eye tissue slide using 26725-1-AP (SLC6A6/TAUT antibody) at dilution of 1:200 (under 10x lens). Heat mediated antigen retrieval with Tris-EDTA buffer (pH 9.0).



Immunohistochemical analysis of paraffin-embedded rat eye tissue slide using 26725-1-AP (SLC6A6/TAUT antibody) at dilution of 1:200 (under 40x lens). Heat mediated antigen retrieval with Tris-EDTA buffer (pH 9.0).