

For Research Use Only

MS4A2 Polyclonal antibody

Catalog Number: 26808-1-AP



Basic Information

Catalog Number:

26808-1-AP

Size:

550 µg/ml

Source:

Rabbit

Isotype:

IgG

Immunogen Catalog Number:

AG25196

GenBank Accession Number:

BC074843

GeneID (NCBI):

2206

UNIPROT ID:

Q01362

Full Name:

membrane-spanning 4-domains, subfamily A, member 2 (Fc fragment of IgE, high affinity I, receptor for; beta polypeptide)

Calculated MW:

244 aa, 27 kDa

Observed MW:

25-27 kDa

Purification Method:

Antigen affinity purification

Recommended Dilutions:

WB 1:1000-1:4000

Applications

Tested Applications:

WB, ELISA

Species Specificity:

human, mouse

Positive Controls:

WB: mouse lung tissue,

Background Information

MS4A is a new gene family with four transmembrane-spanning domains and is crucial for cell differentiation, signaling, and cell cycle control. The membrane-spanning 4 domains, superfamily A, number 2 gene (MS4A2, also named as the beta-chain of the high affinity IgE receptor or Fc ϵ RI β gene, FCER1B), as a member of the MS4A family, is a component of the high-affinity IgE receptor, with co-immunoprecipitation experiments demonstrating that it associates with FcRI α and FcR γ to form a tetrameric receptor complex ($\alpha\beta\gamma 2$) that is expressed on mast cells and basophils at high density (PMID: 25835430). MS4A2 is strongly associated with the prognosis of lung adenocarcinoma and lung cancer brain metastases (PMID: 37533433).

Storage

Storage:

Store at -20°C. Stable for one year after shipment.

Storage Buffer:

PBS with 0.02% sodium azide and 50% glycerol pH 7.3.

Aliquoting is unnecessary for -20°C storage

For technical support and original validation data for this product please contact:

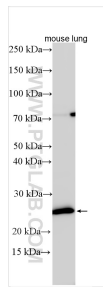
T: 4006900926

E: Proteintech-CN@ptglab.com

W: ptgcn.com

This product is exclusively available under Proteintech Group brand and is not available to purchase from any other manufacturer.

Selected Validation Data



mouse lung tissue lysates were subjected to SDS PAGE followed by western blot with 26808-1-AP (MS4A2 antibody) at dilution of 1:2000 incubated at room temperature for 1.5 hours.