

For Research Use Only

SUSD4 Polyclonal antibody

Catalog Number: 26829-1-AP



Basic Information

Catalog Number: 26829-1-AP	GenBank Accession Number: BC004888	Purification Method: Antigen affinity purification
Size: 350 µg/ml	GeneID (NCBI): 55061	Recommended Dilutions: WB 1:500-1:1000 IHC 1:50-1:500 IF-P 1:50-1:500
Source: Rabbit	UNIPROT ID: Q5VX71	
Isotype: IgG	Full Name: sushi domain containing 4	
Immunogen Catalog Number: AG25346	Calculated MW: 490 aa, 54 kDa	
	Observed MW: 47 kDa	

Applications

Tested Applications:

WB, IF-P, IHC, ELISA

Species Specificity:

mouse

Note-IHC: suggested antigen retrieval with TE buffer pH 9.0; (*) Alternatively, antigen retrieval may be performed with citrate buffer pH 6.0

Positive Controls:

WB : mouse brain tissue,

IHC : mouse cerebellum tissue,

IF-P : mouse cerebellum tissue,

Background Information

The SUSD4 (Sushi domain-containing protein 4) gene resides on chromosome 1q41 and encodes a 49-kD transmembrane protein containing four extracellular Sushi domain motifs. The Sushi domain, also known as the complement control protein domain, is commonly involved in protein-protein interactions. Many complement regulators are constructed with complement control protein domains. SUSD4 functions as a complement system regulator, as it has been shown to bind to the C1 complex and complement component C1q and block the activation of the complement cascade by interrupting the formation of C3 convertase. (PMID: 32179479)

Storage

Storage:

Store at -20°C. Stable for one year after shipment.

Storage Buffer:

PBS with 0.02% sodium azide and 50% glycerol pH 7.3.

Aliquoting is unnecessary for -20°C storage

For technical support and original validation data for this product please contact:

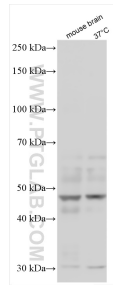
T: 4006900926

E: Proteintech-CN@ptglab.com

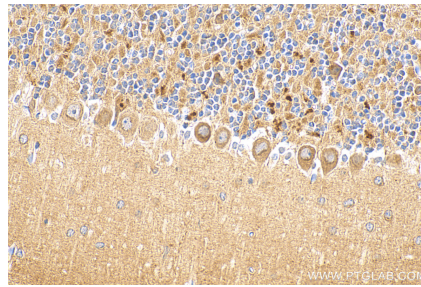
W: ptgcn.com

This product is exclusively available under Proteintech Group brand and is not available to purchase from any other manufacturer.

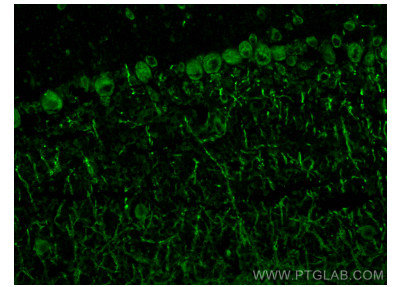
Selected Validation Data



Various lysates were subjected to SDS PAGE followed by western blot with 26829-1-AP (SUSD4 antibody) at dilution of 1:500 incubated at room temperature for 1.5 hours.



Immunohistochemical analysis of paraffin-embedded mouse cerebellum tissue slide using 26829-1-AP (SUSD4 antibody) at dilution of 1:200 (under 40x lens). Heat mediated antigen retrieval with Tris-EDTA buffer (pH 9.0).



Immunofluorescent analysis of (4% PFA) fixed paraffin-embedded mouse cerebellum tissue using SUSD4 antibody (26829-1-AP) at dilution of 1:200 and CoraLite®488-Conjugated AffiniPure Goat Anti-Rabbit IgG(H+L). Heat mediated antigen retrieval with Tris-EDTA buffer (pH 9.0).