

For Research Use Only

RAF1 Polyclonal antibody

Catalog Number: 26863-1-AP **6 Publications**



Basic Information

Catalog Number: 26863-1-AP	GenBank Accession Number: BC018119	Purification Method: Antigen affinity purification
Size: 900 µg/ml	GeneID (NCBI): 5894	Recommended Dilutions: WB 1:500-1:2000 IHC 1:50-1:500
Source: Rabbit	UNIPROT ID: P04049	
Isotype: IgG	Full Name: v-raf-1 murine leukemia viral oncogene homolog 1	
Immunogen Catalog Number: AG25423	Calculated MW: 648 aa, 73 kDa	
	Observed MW: 70-75 kDa	

Applications

Tested Applications: IHC, WB, ELISA	Positive Controls: WB : DU 145 cells, IHC : human prostate cancer tissue, human colon cancer tissue
Cited Applications: WB, IF	
Species Specificity: human	
Cited Species: human, mouse	

Note-IHC: suggested antigen retrieval with TE buffer pH 9.0; (*) Alternatively, antigen retrieval may be performed with citrate buffer pH 6.0

Background Information

Raf-1 proto-oncogene, serine/threonine kinase (RAF1), is a MAP kinase kinase kinase (MAP3K), which functions downstream of the Ras family of membrane associated GTPases to which it binds directly. RAF1 has two isoforms with MW of 73, 75 kDa. RAF1 plays an important role in the control of gene expression involved in the cell division cycle, apoptosis, cell differentiation and cell migration.

Notable Publications

Author	Pubmed ID	Journal	Application
Dali Zhao	34555268	FEBS Open Bio	WB
Feifei Zhang	34017080	Oncogene	WB
Qiwei Jiang	37294756	Sci Adv	WB, IF

Storage

Storage:
Store at -20°C. Stable for one year after shipment.
Storage Buffer:
PBS with 0.02% sodium azide and 50% glycerol pH 7.3.
Aliquoting is unnecessary for -20°C storage

For technical support and original validation data for this product please contact:

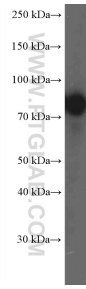
T: 4006900926

E: Proteintech-CN@ptglab.com

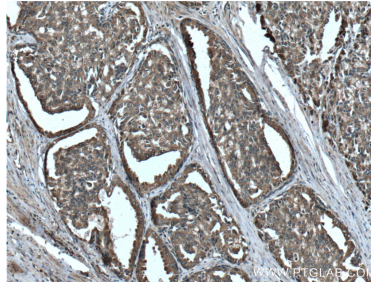
W: ptgcn.com

This product is exclusively available under Proteintech Group brand and is not available to purchase from any other manufacturer.

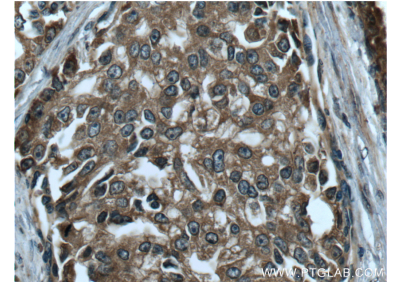
Selected Validation Data



DU 145 cells were subjected to SDS PAGE followed by western blot with 26863-1-AP (RAF1 Antibody) at dilution of 1:1000 incubated at room temperature for 1.5 hours.



Immunohistochemical analysis of paraffin-embedded human prostate cancer tissue slide using 26863-1-AP (RAF1 Antibody) at dilution of 1:200 (under 10x lens). Heat mediated antigen retrieval with Tris-EDTA buffer (pH 9.0).



Immunohistochemical analysis of paraffin-embedded human prostate cancer tissue slide using 26863-1-AP (RAF1 Antibody) at dilution of 1:200 (under 40x lens). Heat mediated antigen retrieval with Tris-EDTA buffer (pH 9.0).