

For Research Use Only

COL10A1 Polyclonal antibody

Catalog Number: 26984-1-AP **1 Publications**



Basic Information

Catalog Number: 26984-1-AP	GenBank Accession Number: BC130621	Purification Method: Antigen affinity purification
Size: 1000 µg/ml	GeneID (NCBI): 1300	Recommended Dilutions: WB 1:500-1:1000 IHC 1:50-1:500
Source: Rabbit	UNIPROT ID: Q03692	
Isotype: IgG	Full Name: collagen, type X, alpha 1	
Immunogen Catalog Number: AG25741	Calculated MW: 680 aa, 66 kDa	
	Observed MW: 60-66 kDa	

Applications

Tested Applications: IHC, WB, ELISA	Positive Controls: WB : BxPC-3 cells, ROS1728 cells, HCT 116 cells
Cited Applications: WB	IHC : mouse liver tissue,
Species Specificity: human, mouse, rat	
Cited Species: human	
Note-IHC: suggested antigen retrieval with TE buffer pH 9.0; (*) Alternatively, antigen retrieval may be performed with citrate buffer pH 6.0	

Background Information

Collagen type X alpha 1 (COL10A1), a secreted, short-chain collagen, belongs to the collagen family, which is a major interstitial matrix component specifically expressed by hypertrophic chondrocytes. COL10A1 expression is elevated in many solid tumor types, such as colon cancer, esophagus cancer, and breast cancer, and displays vital roles in many critical cellular processes (PMID: 30154451, 25321476).

Notable Publications

Author	Pubmed ID	Journal	Application
Longfei Li	38528538	J Orthop Surg Res	WB

Storage

Storage:
Store at -20°C. Stable for one year after shipment.
Storage Buffer:
PBS with 0.02% sodium azide and 50% glycerol pH 7.3.
Aliquoting is unnecessary for -20°C storage

For technical support and original validation data for this product please contact:

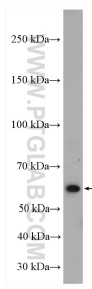
T: 4006900926

E: Proteintech-CN@ptglab.com

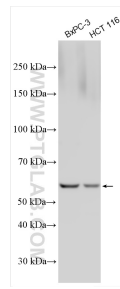
W: ptgcn.com

This product is exclusively available under Proteintech Group brand and is not available to purchase from any other manufacturer.

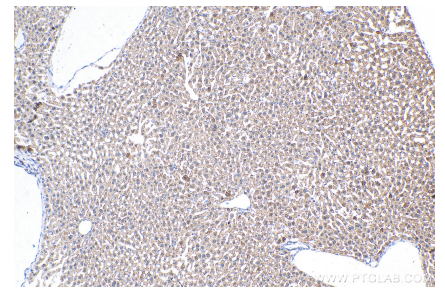
Selected Validation Data



ROS1728 cells were subjected to SDS PAGE followed by western blot with 26984-1-AP (COL10A1 antibody) at dilution of 1:600 incubated at room temperature for 1.5 hours.



Various lysates were subjected to SDS PAGE followed by western blot with 26984-1-AP (COL10A1 antibody) at dilution of 1:500 incubated at room temperature for 1.5 hours.



Immunohistochemical analysis of paraffin-embedded mouse liver tissue slide using 26984-1-AP (COL10A1 antibody) at dilution of 1:200 (under 10x lens). Heat mediated antigen retrieval with Tris-EDTA buffer (pH 9.0).