

For Research Use Only

# GH1 Polyclonal antibody

Catalog Number: 27079-1-AP



## Basic Information

<b>Catalog Number:</b> 27079-1-AP	<b>GenBank Accession Number:</b> BC075012	<b>Purification Method:</b> Antigen affinity purification
<b>Size:</b> 450 µg/ml	<b>GeneID (NCBI):</b> 2688	<b>Recommended Dilutions:</b> WB 1:500-1:2000 IHC 1:50-1:500
<b>Source:</b> Rabbit	<b>UNIPROT ID:</b> P01241	
<b>Isotype:</b> IgG	<b>Full Name:</b> GH1	
<b>Immunogen Catalog Number:</b> AG22841	<b>Calculated MW:</b> 217 aa, 25 kDa	
	<b>Observed MW:</b> 22 kDa	

## Applications

### Tested Applications:

IHC, WB, ELISA

### Species Specificity:

human

**Note-IHC: suggested antigen retrieval with TE buffer pH 9.0; (\*) Alternatively, antigen retrieval may be performed with citrate buffer pH 6.0**

### Positive Controls:

WB : human placenta tissue,

IHC : human pituitary adenoma tissue, human placenta tissue

## Background Information

GH1, also named as GH or GH-N, belongs to the somatotropin/prolactin family. GH1 plays an important role in growth control. Its major role in stimulating body growth is to stimulate the liver and other tissues to secrete IGF-1. It stimulates both the differentiation and proliferation of myoblasts. It also stimulates amino acid uptake and protein synthesis in muscle and other tissues.

## Storage

### Storage:

Store at -20°C. Stable for one year after shipment.

### Storage Buffer:

PBS with 0.02% sodium azide and 50% glycerol pH 7.3.

Aliquoting is unnecessary for -20°C storage

For technical support and original validation data for this product please contact:

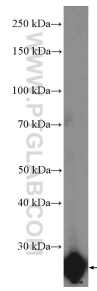
T: 4006900926

E: [Proteintech-CN@ptglab.com](mailto:Proteintech-CN@ptglab.com)

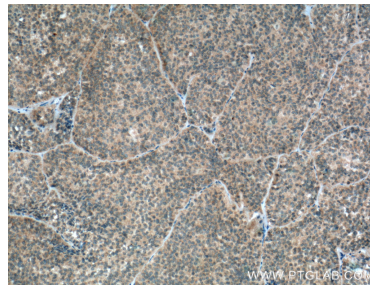
W: [ptgcn.com](http://ptgcn.com)

**This product is exclusively available under Proteintech Group brand and is not available to purchase from any other manufacturer.**

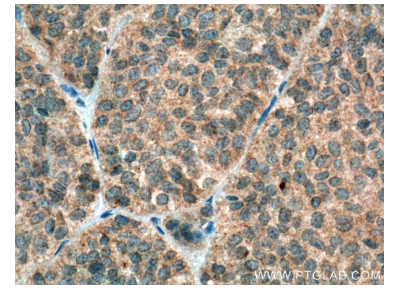
## Selected Validation Data



human placenta tissue were subjected to SDS PAGE followed by western blot with 27079-1-AP (GH1 antibody at dilution of 1:1000 incubated at room temperature for 1.5 hours.



Immunohistochemical analysis of paraffin-embedded human pituitary adenoma tissue slide using 27079-1-AP (GH1 antibody at dilution of 1:200 (under 10x lens). Heat mediated antigen retrieval with Tris-EDTA buffer (pH 9.0).



Immunohistochemical analysis of paraffin-embedded human pituitary adenoma tissue slide using 27079-1-AP (GH1 antibody at dilution of 1:200 (under 40x lens). Heat mediated antigen retrieval with Tris-EDTA buffer (pH 9.0).