

For Research Use Only

SCRIB Polyclonal antibody, PBS Only

Catalog Number: 27083-1-PBS



Basic Information

Catalog Number: 27083-1-PBS	GenBank Accession Number: BC036905	Purification Method: Antigen affinity purification
Size: 1 mg/ml	GeneID (NCBI): 23513	
Source: Rabbit	UNIPROT ID: Q14160	
Isotype: IgG	Full Name: scribbled homolog (Drosophila)	
Immunogen Catalog Number: AG25795	Calculated MW: 1630 aa, 175 kDa	
	Observed MW: 260 kDa	

Applications

Tested Applications:
WB, IHC, Indirect ELISA

Species Specificity:
human, mouse

Background Information

SCRIB encodes a large, 260-kDa cytoplasmic scaffolding protein that comprises a large leucine-rich repeat (LRR) region and 4 PDZ domains that regulate protein-protein interactions. In mammals, cell polarity is established and maintained by at least 3 protein modules (Scrib, Crumbs, and Par). The apical (Crumbs and Par) and basolateral (Scrib) modules function in a mutually antagonistic relationship to regulate various polarization processes such as apical-basal polarity, planar cell polarity, asymmetric cell division and migration. The loss of SCRIB in malignant tumors suggest that it has potential to be a tumor suppressor. Alteration of polarity through deletion, downregulation, overexpression, and mislocalization can induce structural and functional alteration of cells that might be related to tumorigenesis. Mislocalization of SCRIB is involved in epithelial-to-mesenchymal transition (EMT) by inducing loss of E-cadherin. Deregulated SCRIB expression induces tumorigenesis in breast and liver. (PMID: 28460446, PMID: 32564009)

Storage

Storage:
Store at -80°C.
The product is shipped with ice packs. Upon receipt, store it immediately at -80°C

Storage Buffer:
PBS Only

For technical support and original validation data for this product please contact:

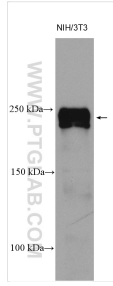
T: 4006900926

E: Proteintech-CN@ptglab.com

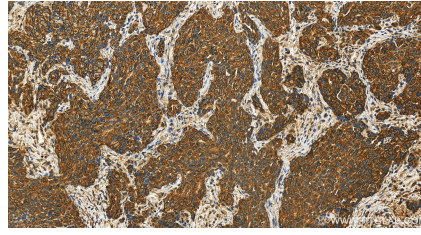
W: ptgcn.com

This product is exclusively available under Proteintech Group brand and is not available to purchase from any other manufacturer.

Selected Validation Data



NIH/3T3 cells were subjected to SDS PAGE followed by western blot with 27083-1-AP (SCRIB antibody) at dilution of 1:6000 incubated at room temperature for 1.5 hours. This data was developed using the same antibody clone with 27083-1-PBS in a different storage buffer formulation.



Immunohistochemical analysis of paraffin-embedded human ovary cancer tissue slide using 27083-1-AP (SCRIB antibody) at dilution of 1:200 (under 20x lens). Heat mediated antigen retrieval with Tris-EDTA buffer (pH 9.0). This data was developed using the same antibody clone with 27083-1-PBS in a different storage buffer formulation.