

For Research Use Only

KIF13A Polyclonal antibody

Catalog Number: 27210-1-AP



Basic Information

Catalog Number: 27210-1-AP	GenBank Accession Number: BC127115	Purification Method: Antigen affinity purification
Size: 240 µg/ml	GeneID (NCBI): 63971	Recommended Dilutions: WB 1:500-1:1000 IHC 1:50-1:500
Source: Rabbit	UNIPROT ID: Q9H1H9	
Isotype: IgG	Full Name: kinesin family member 13A	
Immunogen Catalog Number: AG24356	Calculated MW: 1805 aa, 202 kDa	
	Observed MW: 202 kDa	

Applications

Tested Applications:

IHC, WB, ELISA

Species Specificity:

human

Note-IHC: suggested antigen retrieval with TE buffer pH 9.0; (*) Alternatively, antigen retrieval may be performed with citrate buffer pH 6.0

Positive Controls:

WB : HepG2 cells,

IHC : human liver cancer tissue,

Background Information

Storage

Storage:

Store at -20°C. Stable for one year after shipment.

Storage Buffer:

PBS with 0.02% sodium azide and 50% glycerol pH 7.3.

Aliquoting is unnecessary for -20°C storage

For technical support and original validation data for this product please contact:

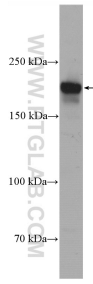
T: 4006900926

E: Proteintech-CN@ptglab.com

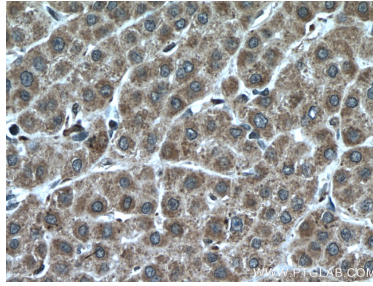
W: ptgcn.com

This product is exclusively available under Proteintech Group brand and is not available to purchase from any other manufacturer.

Selected Validation Data



HepG2 cells were subjected to SDS PAGE followed by western blot with 27210-1-AP (KIF13A antibody) at dilution of 1:600 incubated at room temperature for 1.5 hours.



Immunohistochemical analysis of paraffin-embedded human liver cancer tissue slide using 27210-1-AP (KIF13A antibody) at dilution of 1:200 (under 10x lens. Heat mediated antigen retrieval with Tris-EDTA buffer (pH 9.0).