

For Research Use Only

PELP1 Polyclonal antibody

Catalog Number: 27239-1-AP



Basic Information

Catalog Number: 27239-1-AP	GenBank Accession Number: BC069058	Purification Method: Antigen affinity purification
Size: 550 µg/ml	GeneID (NCBI): 27043	Recommended Dilutions: IF/ICC 1:50-1:500
Source: Rabbit	UNIPROT ID: Q8IZL8	
Isotype: IgG	Full Name: proline, glutamate and leucine rich protein 1	
Immunogen Catalog Number: AG25729	Calculated MW: 1130 aa, 120 kDa	

Applications

Tested Applications: IF/ICC, ELISA	Positive Controls: IF/ICC : HeLa cells,
Species Specificity: human	

Background Information

PELP1 was first identified as a 160 kDa protein in a screen for Src homology 2 (SH2) domain-binding proteins. PELP1 is overexpressed in 60-80% of breast tumors and plays important roles in both ER genomic and non-genomic signaling. In vivo, PELP1 subcellular localization is primarily nuclear in normal breast tissue, but it is localized to the cytoplasm in about 40% of invasive breast tumors. In the nucleus, PELP1 interacts with a number of transcription factors. The proto-oncogenic functions of PELP1 involve different cellular processes including epigenetic modifications leading to ER transactivation and breast cancer progression. Furthermore, PELP1 activates kinase cascades in the cytoplasm such as MAPK activation via c-Src and PI3K signaling.

Storage

Storage:
Store at -20°C. Stable for one year after shipment.
Storage Buffer:
PBS with 0.02% sodium azide and 50% glycerol pH 7.3.
Aliquoting is unnecessary for -20°C storage

For technical support and original validation data for this product please contact:

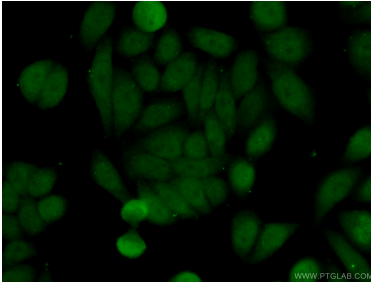
T: 4006900926

E: Proteintech-CN@ptglab.com

W: ptgcn.com

This product is exclusively available under Proteintech Group brand and is not available to purchase from any other manufacturer.

Selected Validation Data



Immunofluorescent analysis of (4% PFA) fixed HeLa cells using 27239-1-AP (PELP1 antibody) at dilution of 1:50 and Alexa Fluor 488-conjugated AffiniPure Goat Anti-Rabbit IgG(H+L).