

For Research Use Only

# ECE1 Polyclonal antibody

Catalog Number: 27245-1-AP



## Basic Information

<b>Catalog Number:</b> 27245-1-AP	<b>GenBank Accession Number:</b> BC126257	<b>Purification Method:</b> Antigen affinity purification
<b>Size:</b> 270 µg/ml	<b>GeneID (NCBI):</b> 1889	<b>Recommended Dilutions:</b> WB 1:500-1:2000
<b>Source:</b> Rabbit	<b>UNIPROT ID:</b> P42892	
<b>Isotype:</b> IgG	<b>Full Name:</b> endothelin converting enzyme 1	
<b>Immunogen Catalog Number:</b> AG26124	<b>Observed MW:</b> 87-110 kDa	

## Applications

<b>Tested Applications:</b> WB, ELISA	<b>Positive Controls:</b> WB : A549 cells, HUVEC cells, MCF-7 cells
<b>Species Specificity:</b> human	

## Background Information

ECE1, Endothelin-converting enzyme 1, also known as ECE. It is located in cell membrane, and it has 4 isoforms. All isoforms are expressed in umbilical vein endothelial cells, polynuclear neutrophils, fibroblasts, atrium cardiomyocytes and ventricles. Isoforms A, B and C are also expressed in placenta, lung, heart, adrenal gland and phaeochromocytoma; isoforms A and C in liver, testis and small intestine; isoform B, C and D in endothelial cells and umbilical vein smooth muscle cells; isoforms C and D in saphenous vein cells, and isoform C in kidney (PMID: 9396733). The protein encoded by this gene is involved in proteolytic processing of endothelin precursors to biologically active peptides. Mutations in this gene are associated with Hirschsprung disease, cardiac defects and autonomic dysfunction. Alternatively spliced transcript variants encoding different isoforms have been noted for this gene. The calculated molecular weight of ECE1 is 87 kDa, as a result of glycosylation, the apparent molecular mass of ECE1 is approximately 87-110 kDa.

## Storage

**Storage:**  
Store at -20°C. Stable for one year after shipment.  
**Storage Buffer:**  
PBS with 0.02% sodium azide and 50% glycerol pH 7.3.  
Aliquoting is unnecessary for -20°C storage

For technical support and original validation data for this product please contact:

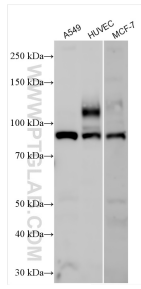
T: 4006900926

E: [Proteintech-CN@ptglab.com](mailto:Proteintech-CN@ptglab.com)

W: [ptgcn.com](http://ptgcn.com)

**This product is exclusively available under Proteintech Group brand and is not available to purchase from any other manufacturer.**

## Selected Validation Data



Various lysates were subjected to SDS PAGE followed by western blot with 27245-1-AP (ECE1 antibody) at dilution of 1:1000 incubated at room temperature for 1.5 hours.