

For Research Use Only

EPDR1 Polyclonal antibody

Catalog Number: 27252-1-AP

2 Publications



Basic Information

Catalog Number:

27252-1-AP

Size:

550 ug/ml

Source:

Rabbit

Isotype:

IgG

Immunogen Catalog Number:

AG26120

GenBank Accession Number:

BC018299

GeneID (NCBI):

54749

UNIPROT ID:

Q9UM22

Full Name:

Mammalian ependymin-related protein 1

Calculated MW:

25 kDa

Observed MW:

25-30 kDa

Purification Method:

Antigen affinity purification

Recommended Dilutions:

WB 1:2000-1:12000

IHC 1:1000-1:4000

Applications

Tested Applications:

WB, IHC, ELISA

Cited Applications:

WB

Species Specificity:

human, mouse, rat

Cited Species:

human

Positive Controls:

WB : mouse brain tissue, rat brain tissue

IHC : human stomach tissue,

Note-IHC: suggested antigen retrieval with TE buffer pH 9.0; (*) Alternatively, antigen retrieval may be performed with citrate buffer pH 6.0

Background Information

The ependymin-related 1 (EPDR1) gene, also known as MERP1 and UCC1, encodes for a protein related to ependymins, which are type II transmembrane proteins that are similar to two families of cell adhesion molecules: the protocadherins and ependymins. Ependymin-related protein 1 (EPDR1) was recently identified as a secreted human batokine regulating mitochondrial respiration linked to thermogenesis in brown fat. Proteomics studies of mammalian mannose-6-phosphate (M6P) glycoproteins have identified EPDR1 as a lysosomal protein with unknown function. The lysosomal localization of EPDR1 was further demonstrated in mouse brain homogenates by subcellular fractionation.(PMID: 36343918, PMID: 33902536, PMID: 30729188)

Notable Publications

Author	Pubmed ID	Journal	Application
Xiuqing Liang	33165408	Int J Clin Exp Pathol	WB
Wenyang Li	39104482	Heliyon	WB

Storage

Storage:

Store at -20°C. Stable for one year after shipment.

Storage Buffer:

PBS with 0.02% sodium azide and 50% glycerol pH 7.3.

Aliquoting is unnecessary for -20°C storage

For technical support and original validation data for this product please contact:

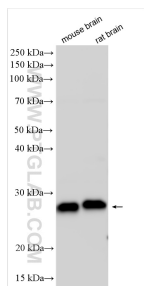
T: 4006900926

E: Proteintech-CN@ptglab.com

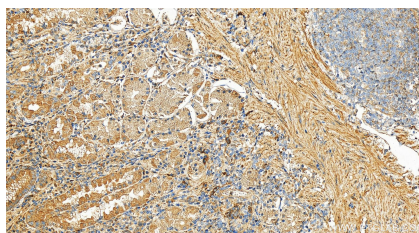
W: ptgcn.com

This product is exclusively available under Proteintech Group brand and is not available to purchase from any other manufacturer.

Selected Validation Data



Various lysates were subjected to SDS PAGE followed by western blot with 27252-1-AP (EPDR1 antibody) at dilution of 1:6000 incubated at room temperature for 1.5 hours.



Immunohistochemical analysis of paraffin-embedded human stomach tissue slide using 27252-1-AP (EPDR1 antibody) at dilution of 1:2000 (under 20x lens). Heat mediated antigen retrieval with Tris-EDTA buffer (pH 9.0).