

For Research Use Only

KLHDC1 Polyclonal antibody

Catalog Number: 27277-1-AP



Basic Information

Catalog Number: 27277-1-AP	GenBank Accession Number: BC101597	Purification Method: Antigen affinity purification
Size: 700 µg/ml	GeneID (NCBI): 122773	Recommended Dilutions: WB 1:500-1:2000
Source: Rabbit	UNIPROT ID: Q8N7A1	
Isotype: IgG	Full Name: kelch domain containing 1	
Immunogen Catalog Number: AG23704	Observed MW: 47 kDa	

Applications

Tested Applications: WB, ELISA	Positive Controls: WB : HeLa cells, mouse liver tissue, rat liver tissue
Species Specificity: human, mouse, rat	

Background Information

Storage

Storage:
Store at -20°C. Stable for one year after shipment.
Storage Buffer:
PBS with 0.02% sodium azide and 50% glycerol pH 7.3.
Aliquoting is unnecessary for -20°C storage

For technical support and original validation data for this product please contact:

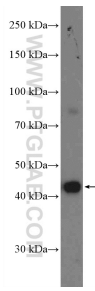
T: 4006900926

E: Proteintech-CN@ptglab.com

W: ptgcn.com

This product is exclusively available under Proteintech Group brand and is not available to purchase from any other manufacturer.

Selected Validation Data



HeLa cells were subjected to SDS PAGE followed by western blot with 27277-1-AP (KLHDC1 Antibody) at dilution of 1:1000 incubated at room temperature for 1.5 hours.