

For Research Use Only

# MRPL35 Polyclonal antibody

Catalog Number: 27339-1-AP



## Basic Information

<b>Catalog Number:</b> 27339-1-AP	<b>GenBank Accession Number:</b> BC020651	<b>Purification Method:</b> Antigen affinity purification
<b>Size:</b> 450 ug/ml	<b>GeneID (NCBI):</b> 51318	<b>Recommended Dilutions:</b> WB 1:2000-1:12000 IF/ICC 1:200-1:800
<b>Source:</b> Rabbit	<b>UNIPROT ID:</b> Q9NZE8	
<b>Isotype:</b> IgG	<b>Full Name:</b> mitochondrial ribosomal protein L35	
<b>Immunogen Catalog Number:</b> AG26300	<b>Calculated MW:</b> 170 aa, 19 kDa	
	<b>Observed MW:</b> 24 kDa	

## Applications

<b>Tested Applications:</b> WB, IF/ICC, ELISA	<b>Positive Controls:</b> WB : mouse heart tissue, mouse liver tissue IF/ICC : HepG2 cells,
<b>Species Specificity:</b> human, mouse	

## Background Information

Mitochondrial ribosomal protein L35 (MRPL35) is a member of the large subunit family of mitochondrial ribosomal proteins. It plays a key role in the assembly of cytochrome C oxidase, involved in the translation of mitochondrial proteins.

## Storage

**Storage:**  
Store at -20°C. Stable for one year after shipment.  
**Storage Buffer:**  
PBS with 0.02% sodium azide and 50% glycerol pH 7.3.  
Aliquoting is unnecessary for -20°C storage

For technical support and original validation data for this product please contact:

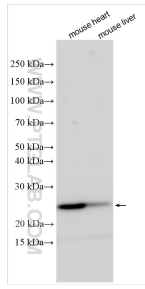
T: 4006900926

E: [Proteintech-CN@ptglab.com](mailto:Proteintech-CN@ptglab.com)

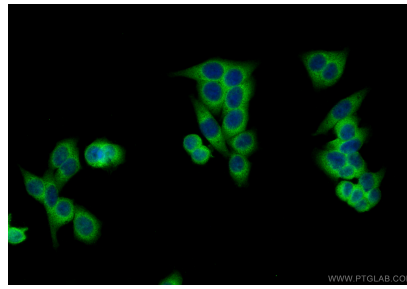
W: [ptgcn.com](http://ptgcn.com)

**This product is exclusively available under Proteintech Group brand and is not available to purchase from any other manufacturer.**

## Selected Validation Data



Various lysates were subjected to SDS PAGE followed by western blot with 27339-1-AP (MRPL35 antibody) at dilution of 1:6000 incubated at room temperature for 1.5 hours.



Immunofluorescent analysis of (4% PFA) fixed HepG2 cells using MRPL35 antibody (27339-1-AP) at dilution of 1:400 and Multi-Ab CoraLite® Plus 488-Goat Anti-Rabbit Recombinant Secondary Antibody (H+L) (RGAR002).