

For Research Use Only

# NLRP10 Polyclonal antibody

Catalog Number: 27345-1-AP



## Basic Information

<b>Catalog Number:</b> 27345-1-AP	<b>GenBank Accession Number:</b> BC104957	<b>Purification Method:</b> Antigen affinity purification
<b>Size:</b> 600 ug/ml	<b>GeneID (NCBI):</b> 338322	<b>Recommended Dilutions:</b> WB 1:500-1:1000
<b>Source:</b> Rabbit	<b>UNIPROT ID:</b> Q86W26	
<b>Isotype:</b> IgG	<b>Full Name:</b> NLR family, pyrin domain containing 10	
<b>Immunogen Catalog Number:</b> AG26402	<b>Calculated MW:</b> 655 aa, 75 kDa	
	<b>Observed MW:</b> 75-80 kDa	

## Applications

<b>Tested Applications:</b> WB, ELISA	<b>Positive Controls:</b> WB : Jurkat cells, THP-1 cells
<b>Species Specificity:</b> human	

## Background Information

NLRP10 is a member of the NALP protein family typically contain a NACHT domain, a NACHT-associated domain (NAD), a C-terminal leucine-rich repeat (LRR) region, and an N-terminal pyrin domain (PYD). NLRP10 likely plays a regulatory role in the innate immune system. The protein belongs to the signal-induced multiprotein complex, the inflammasome, that activates the pro-inflammatory caspases, caspase-1 and caspase-5.

## Storage

**Storage:**  
Store at -20°C. Stable for one year after shipment.  
**Storage Buffer:**  
PBS with 0.02% sodium azide and 50% glycerol pH 7.3.  
Aliquoting is unnecessary for -20°C storage

For technical support and original validation data for this product please contact:

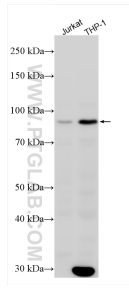
T: 4006900926

E: [Proteintech-CN@ptglab.com](mailto:Proteintech-CN@ptglab.com)

W: [ptgcn.com](http://ptgcn.com)

**This product is exclusively available under Proteintech Group brand and is not available to purchase from any other manufacturer.**

## Selected Validation Data



Various lysates were subjected to SDS PAGE followed by western blot with 27345-1-AP (NLRP10 antibody) at dilution of 1:600 incubated at room temperature for 1.5 hours.