

For Research Use Only

# CLUL1 Polyclonal antibody

Catalog Number: 27498-1-AP



## Basic Information

<b>Catalog Number:</b> 27498-1-AP	<b>GenBank Accession Number:</b> BC025381	<b>Purification Method:</b> Antigen affinity purification
<b>Size:</b> 300 ug/ml	<b>GeneID (NCBI):</b> 27098	<b>Recommended Dilutions:</b> WB 1:500-1:1000
<b>Source:</b> Rabbit	<b>UNIPROT ID:</b> Q15846	
<b>Isotype:</b> IgG	<b>Full Name:</b> clusterin-like 1 (retinal)	
<b>Immunogen Catalog Number:</b> AG26570	<b>Calculated MW:</b> 54 kDa	
	<b>Observed MW:</b> 70 kDa	

## Applications

<b>Tested Applications:</b> WB, ELISA	<b>Positive Controls:</b> WB : ARPE-19 cells,
<b>Species Specificity:</b> human	

## Background Information

Clusterin-like protein 1 (CLUL1) functions as a molecular chaperone, protecting stressed proteins, and is upregulated in various neurodegenerative conditions, suggesting a role in defense against neuronal damage (PMID: 17148042). It is specifically expressed in cone photoreceptor cells and is regulated by the cone-rod homeobox (CRX) (PMID: 14507903). Mutations of CLUL1 were investigated in the context of age-related macular degeneration (AMD), a leading cause of blindness in the elderly (PMID: 17148042).

## Storage

**Storage:**  
Store at -20°C. Stable for one year after shipment.  
**Storage Buffer:**  
PBS with 0.02% sodium azide and 50% glycerol pH 7.3.  
Aliquoting is unnecessary for -20°C storage

For technical support and original validation data for this product please contact:

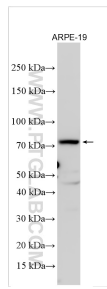
T: 4006900926

E: [Proteintech-CN@ptglab.com](mailto:Proteintech-CN@ptglab.com)

W: [ptgcn.com](http://ptgcn.com)

**This product is exclusively available under Proteintech Group brand and is not available to purchase from any other manufacturer.**

## Selected Validation Data



Various lysates were subjected to SDS PAGE followed by western blot with 27498-1-AP (CLUL1 antibody) at dilution of 1:600 incubated at room temperature for 1.5 hours.