

For Research Use Only

PSMD8 Polyclonal antibody

Catalog Number: 27504-1-AP



Basic Information

Catalog Number: 27504-1-AP	GenBank Accession Number: BC001164	Purification Method: Antigen affinity purification
Size: 750 µg/ml	GeneID (NCBI): 5714	Recommended Dilutions: WB 1:1000-1:8000 IF/ICC 1:200-1:800
Source: Rabbit	UNIPROT ID: P48556	
Isotype: IgG	Full Name: proteasome (prosome, macropain) 26S subunit, non-ATPase, 8	
Immunogen Catalog Number: AG26567	Calculated MW: 257 aa, 30 kDa	
	Observed MW: 30 kDa	

Applications

Tested Applications: IF/ICC, WB, ELISA	Positive Controls: WB : NIH/3T3 cells, IF/ICC : U2OS cells,
Species Specificity: Human, Mouse	

Background Information

The Proteasome 26S Subunit, Non-ATPase (PSMD) gene family, which includes the PSMD1 to PSMD14, regulate ubiquitinated protein breakdown in circulation as well as tumorigenesis. Studies have shown that PSMD8 interacts with the sperm adhesin AQN1 to limit polyfertilization. PSMD8 was more expressed in normal skeletal muscle, cardiac muscle, and tongue muscle; among malignant tumors, PSMD8 was expressed in ovarian cancer, testicular cancer, glioma, and melanoma (PMID:37349676).

Storage

Storage:
Store at -20°C. Stable for one year after shipment.
Storage Buffer:
PBS with 0.02% sodium azide and 50% glycerol pH 7.3.
Aliquoting is unnecessary for -20°C storage

For technical support and original validation data for this product please contact:

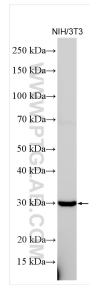
T: 4006900926

E: Proteintech-CN@ptglab.com

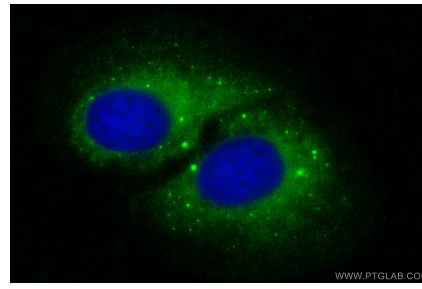
W: ptgcn.com

This product is exclusively available under Proteintech Group brand and is not available to purchase from any other manufacturer.

Selected Validation Data



NIH/3T3 cells were subjected to SDS PAGE followed by western blot with 27504-1-AP (PSMD8 antibody) at dilution of 1:4000 incubated at room temperature for 1.5 hours.



Immunofluorescent analysis of (-20°C Ethanol) fixed U2OS cells using PSMD8 antibody (27504-1-AP) at dilution of 1:400 and CoraLite®488-Conjugated AffiniPure Goat Anti-Rabbit IgG(H+L).