

For Research Use Only

# YTHDC2 Polyclonal antibody

Catalog Number: 27779-1-AP

Featured Product

21 Publications



## Basic Information

**Catalog Number:**

27779-1-AP

**Size:**

800 µg/ml

**Source:**

Rabbit

**Isotype:**

IgG

**Immunogen Catalog Number:**

AG26690

**GenBank Accession Number:**

BC137285

**GeneID (NCBI):**

64848

**UNIPROT ID:**

Q9H6S0

**Full Name:**

YTH domain containing 2

**Observed MW:**

160 kDa

**Purification Method:**

Antigen affinity purification

**Recommended Dilutions:**

WB 1:1000-1:8000

IHC 1:1000-1:4000

IF 1:50-1:500

## Applications

**Tested Applications:**

WB, IF/ICC, IHC, ELISA, FC (Intra)

**Cited Applications:**

WB, IP, IF, RIP, CoIP

**Species Specificity:**

Human, mouse, rat

**Cited Species:**

human, rat, mouse, pig

**Note-IHC: suggested antigen retrieval with TE buffer pH 9.0; (\*) Alternatively, antigen retrieval may be performed with citrate buffer pH 6.0**

**Positive Controls:**

**WB:** HepG2 cells, HeLa cells, MCF-7 cells, MDA-MB-231 cells

**IHC:** rat testis tissue,

**IF:** HepG2 cells,

## Background Information

YTHDC2, also named as Probable ATP-dependent RNA helicase YTHDC2, is a 1430 amino acid protein, which belongs to the DEAD box helicase family. YTHDC2 specifically recognizes and binds N6-methyladenosine (m6A)-containing RNAs. M6A is a modification present at internal sites of mRNAs and some non-coding RNAs and plays a role in the efficiency of mRNA splicing, processing and stability.

## Notable Publications

Author	Pubmed ID	Journal	Application
Kusuma Suphakhong	36183833	J Biol Chem	WB
Hao Sheng	31504235	Carcinogenesis	WB
Lingfang Wang	36288717	Cell Rep	WB

## Storage

**Storage:**

Store at -20°C. Stable for one year after shipment.

**Storage Buffer:**

PBS with 0.02% sodium azide and 50% glycerol pH 7.3.

Aliquoting is unnecessary for -20°C storage

For technical support and original validation data for this product please contact:

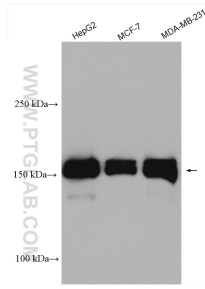
T: 4006900926

E: Proteintech-CN@ptglab.com

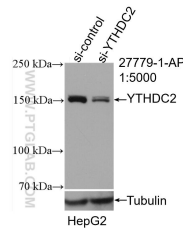
W: ptgcn.com

**This product is exclusively available under Proteintech Group brand and is not available to purchase from any other manufacturer.**

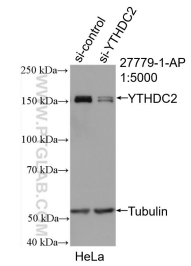
## Selected Validation Data



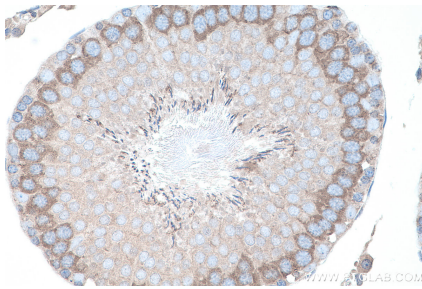
Various lysates were subjected to SDS PAGE followed by western blot with 27779-1-AP (YTHDC2 antibody) at dilution of 1:4000 incubated at room temperature for 1.5 hours.



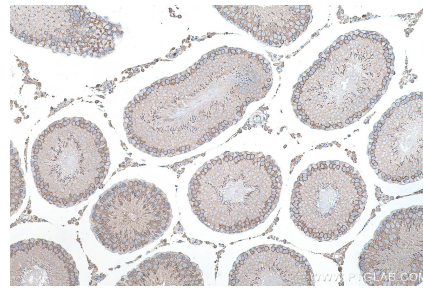
WB result of YTHDC2 antibody (27779-1-AP; 1:5000; incubated at room temperature for 1.5 hours) with sh-Control and sh-YTHDC2 transfected HepG2 cells.



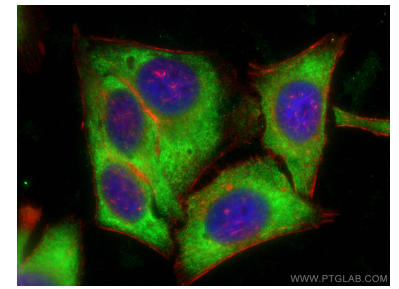
WB result of YTHDC2 antibody (27779-1-AP; 1:5000; incubated at room temperature for 1.5 hours) with sh-Control and sh-YTHDC2 transfected HeLa cells.



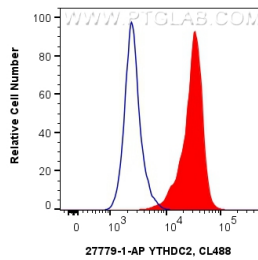
Immunohistochemical analysis of paraffin-embedded rat testis tissue slide using 27779-1-AP (YTHDC2 antibody) at dilution of 1:2000 (under 40x lens). Heat mediated antigen retrieval with Tris-EDTA buffer (pH 9.0).



Immunohistochemical analysis of paraffin-embedded rat testis tissue slide using 27779-1-AP (YTHDC2 antibody) at dilution of 1:2000 (under 10x lens). Heat mediated antigen retrieval with Tris-EDTA buffer (pH 9.0).



Immunofluorescent analysis of (-20°C Ethanol) fixed HepG2 cells using YTHDC2 antibody (27779-1-AP) at dilution of 1:200 and CoraLite@488-Conjugated AffiniPure Goat Anti-Rabbit IgG(H+L), CL594-phalloidin (red).



$1 \times 10^6$  HeLa cells were intracellularly stained with 0.4 ug Anti-Human YTHDC2 (27779-1-AP) and CoraLite@488-Conjugated AffiniPure Goat Anti-Rabbit IgG(H+L) at dilution 1:1000 (red), or 0.4 ug Rabbit IgG control Rabbit PolyAb (30000-O-AP, Clone: ) (blue). Cells were fixed with 4% PFA and permeabilized with Flow Cytometry Perm Buffer (PF00011-C).