

For Research Use Only

PNPLA7 Polyclonal antibody

Catalog Number: 27787-1-AP



Basic Information

Catalog Number: 27787-1-AP	GenBank Accession Number: NM_001098537	Purification Method: Antigen affinity purification
Size: 550 ug/ml	GeneID (NCBI): 375775	Recommended Dilutions: IHC 1:50-1:500
Source: Rabbit	UNIPROT ID: Q6ZV29	
Isotype: IgG	Full Name: patatin-like phospholipase domain containing 7	
Immunogen Catalog Number: AG27184	Calculated MW: 146 kDa	

Applications

Tested Applications: IHC, ELISA	Positive Controls: IHC : mouse cerebellum tissue,
Species Specificity: human, mouse	
Note-IHC: suggested antigen retrieval with TE buffer pH 9.0; (*) Alternatively, antigen retrieval may be performed with citrate buffer pH 6.0	

Background Information

PNPLA7 (Patatin-like phospholipase domain-containing protein 7), also termed NTE-related 1 (NTE-R1) or NRE, is a member of the PNPLAs family, which is conserved protein in mice, rats and humans. It serves key roles in triglyceride hydrolysis, energy metabolism, lipid droplet (LD), and in regulation of adipocyte differentiation. It is reported that PNPLA7 was down-regulated in HCC through hypermethylation of its promoter, which indicates that PNPLA7 may be a potential biomarker for HCC diagnosis (PMID: 16799181, 27347198).

Storage

Storage:
Store at -20°C. Stable for one year after shipment.
Storage Buffer:
PBS with 0.02% sodium azide and 50% glycerol pH 7.3.
Aliquoting is unnecessary for -20°C storage

For technical support and original validation data for this product please contact:

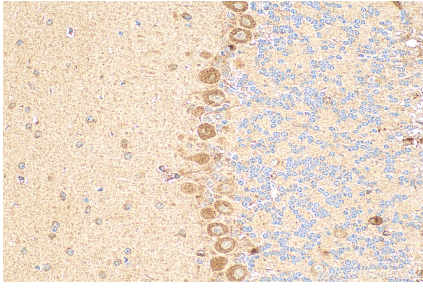
T: 4006900926

E: Proteintech-CN@ptglab.com

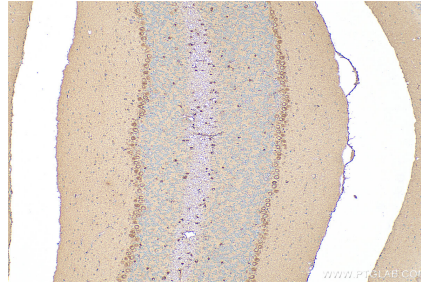
W: ptgcn.com

This product is exclusively available under Proteintech Group brand and is not available to purchase from any other manufacturer.

Selected Validation Data



Immunohistochemical analysis of paraffin-embedded mouse cerebellum tissue slide using 27787-1-AP (PNPLA7 antibody) at dilution of 1:200 (under 40x lens). Heat mediated antigen retrieval with Tris-EDTA buffer (pH 9.0).



Immunohistochemical analysis of paraffin-embedded mouse cerebellum tissue slide using 27787-1-AP (PNPLA7 antibody) at dilution of 1:200 (under 10x lens). Heat mediated antigen retrieval with Tris-EDTA buffer (pH 9.0).