

For Research Use Only

# PARG Polyclonal antibody

Catalog Number: 27808-1-AP **3 Publications**



## Basic Information

**Catalog Number:**

27808-1-AP

**Size:**

900 µg/ml

**Source:**

Rabbit

**Isotype:**

IgG

**Immunogen Catalog Number:**

AG27137

**GenBank Accession Number:**

BC052966

**GeneID (NCBI):**

8505

**UNIPROT ID:**

Q86W56

**Full Name:**

poly (ADP-ribose) glycohydrolase

**Calculated MW:**

111 kDa

**Observed MW:**

100-111 kDa

**Purification Method:**

Antigen affinity purification

**Recommended Dilutions:**

WB 1:2000-1:10000

IP 0.5-4.0 µg for 1.0-3.0 mg of total protein lysate

IHC 1:50-1:500

## Applications

**Tested Applications:**

IHC, IP, WB, ELISA

**Cited Applications:**

WB, IF

**Species Specificity:**

Human, Mouse

**Cited Species:**

human, zebrafish

**Note-IHC: suggested antigen retrieval with TE buffer pH 9.0; (\*) Alternatively, antigen retrieval may be performed with citrate buffer pH 6.0**

**Positive Controls:**

WB : K-562 cells,

IP : mouse testis tissue,

IHC : human breast cancer tissue,

## Background Information

### Notable Publications

Author	Pubmed ID	Journal	Application
Wenchang Zhang	36146855	Viruses	WB,IF
Binghai Zhou	32483468	Theranostics	WB
Anna Rita Bianchi	37240112	Int J Mol Sci	WB

## Storage

**Storage:**

Store at -20°C. Stable for one year after shipment.

**Storage Buffer:**

PBS with 0.02% sodium azide and 50% glycerol pH 7.3.

Aliquoting is unnecessary for -20°C storage

For technical support and original validation data for this product please contact:

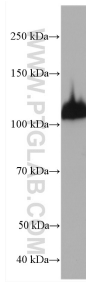
T: 4006900926

E: Proteintech-CN@ptglab.com

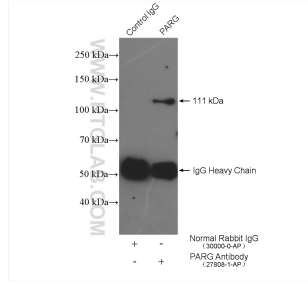
W: ptgcn.com

**This product is exclusively available under Proteintech Group brand and is not available to purchase from any other manufacturer.**

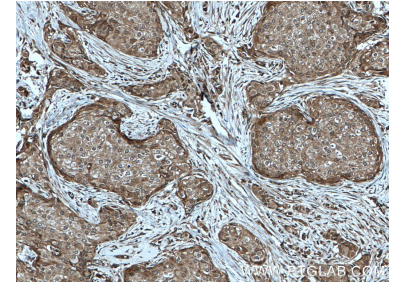
## Selected Validation Data



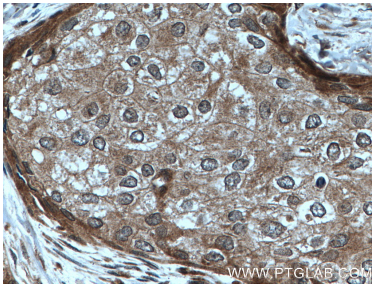
K-562 cells were subjected to SDS PAGE followed by western blot with 27808-1-AP (PARG antibody) at dilution of 1:5000 incubated at room temperature for 1.5 hours.



IP result of anti-PARG (IP:27808-1-AP, 4ug; Detection:27808-1-AP 1:300) with mouse testis tissue lysate 3920 ug.



Immunohistochemical analysis of paraffin-embedded human breast cancer tissue slide using 27808-1-AP (PARG antibody) at dilution of 1:200 (under 10x lens. Heat mediated antigen retrieval with Tris-EDTA buffer (pH 9.0).



Immunohistochemical analysis of paraffin-embedded human breast cancer tissue slide using 27808-1-AP (PARG antibody) at dilution of 1:200 (under 40x lens. Heat mediated antigen retrieval with Tris-EDTA buffer (pH 9.0).