

For Research Use Only

TRPV4 Polyclonal antibody

Catalog Number: 27892-1-AP



Basic Information

Catalog Number:

27892-1-AP

Size:

450 µg/ml

Source:

Rabbit

Isotype:

IgG

Immunogen Catalog Number:

AG27253

GenBank Accession Number:

NM_001177428.1

GeneID (NCBI):

59341

UNIPROT ID:

Q9HBA0

Full Name:

transient receptor potential cation channel, subfamily V, member 4

Calculated MW:

98 kDa

Observed MW:

85-98 kDa

Purification Method:

Antigen affinity purification

Recommended Dilutions:

WB 1:500-1:1000

Applications

Tested Applications:

WB, ELISA

Species Specificity:

Human

Positive Controls:

WB : 37°C incubated SH-SY5Y cells,

Background Information

TRPV4, also named as VRL2 and VROAC, belongs to the transient receptor family and TrpV subfamily. It is a non-selective calcium permeant cation channel protein which involved in osmotic sensitivity and mechanosensitivity. Activation by exposure to hypotonicity within the physiological range exhibits an outward rectification. It is activated by low pH, citrate and phorbol esters. Channel activity seems to be regulated by a calmodulin-dependent mechanism with a negative feedback mechanism. Defects in TRPV4 are the cause of brachyolmia type 3 (BRAC3), spondylometaphyseal dysplasia Kozlowski type (SMDK) and metatropic dysplasia (MTD). Multiple transcript variants encoding different isoforms have been found.

Storage

Storage:

Store at -20°C. Stable for one year after shipment.

Storage Buffer:

PBS with 0.02% sodium azide and 50% glycerol pH 7.3.

Aliquoting is unnecessary for -20°C storage

For technical support and original validation data for this product please contact:

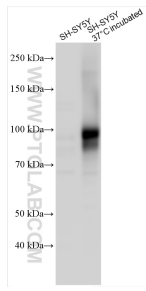
T: 4006900926

E: Proteintech-CN@ptglab.com

W: ptgcn.com

This product is exclusively available under Proteintech Group brand and is not available to purchase from any other manufacturer.

Selected Validation Data



SH-SY5Y cell lysates (heated at 100°C, heated at 37°C) were subjected to SDS PAGE followed by western blot with 27892-1-AP (TRPV4 antibody) at dilution of 1:600 incubated at room temperature for 1.5 hours.