

For Research Use Only

CRB2 Polyclonal antibody

Catalog Number: 28015-1-AP



Basic Information

Catalog Number: 28015-1-AP	GenBank Accession Number: NM_173689	Purification Method: Antigen affinity purification
Size: 400 µg/ml	GeneID (NCBI): 286204	Recommended Dilutions: IHC 1:50-1:500
Source: Rabbit	UNIPROT ID: Q5IJ48	
Isotype: IgG	Full Name: crumbs homolog 2 (Drosophila)	
Immunogen Catalog Number: AG27826	Calculated MW: 134 aa	

Applications

Tested Applications: IHC, ELISA	Positive Controls: IHC : mouse brain tissue,
Species Specificity: Human, mouse	

Note-IHC: suggested antigen retrieval with TE buffer pH 9.0; (*) Alternatively, antigen retrieval may be performed with citrate buffer pH 6.0

Background Information

CRB2 (Crumbs homolog-2) has a large extracellular domain with epidermal growth-factor-like and laminin-A globular domains, a single transmembrane domain, and an intracellular C-terminal domain of 37 amino acids (PMID: 31438467). CRB2 is a candidate modifying gene of human CRB1-related retinal dystrophy (PMID: 24565864).

Storage

Storage:
Store at -20°C. Stable for one year after shipment.
Storage Buffer:
PBS with 0.02% sodium azide and 50% glycerol pH 7.3.
Aliquoting is unnecessary for -20°C storage

For technical support and original validation data for this product please contact:

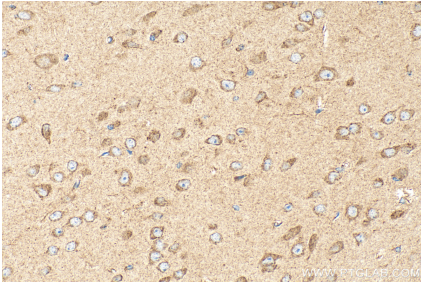
T: 4006900926

E: Proteintech-CN@ptglab.com

W: ptgcn.com

This product is exclusively available under Proteintech Group brand and is not available to purchase from any other manufacturer.

Selected Validation Data



Immunohistochemical analysis of paraffin-embedded mouse brain tissue slide using 28015-1-AP (CRB2 antibody) at dilution of 1:200 (under 40x lens). Heat mediated antigen retrieval with Tris-EDTA buffer (pH 9.0).