

For Research Use Only

FSTL3/FLRG Polyclonal antibody

Catalog Number: 28218-1-AP

Featured Product



Basic Information

Catalog Number:

28218-1-AP

Size:

600 ug/ml

Source:

Rabbit

Isotype:

IgG

Immunogen Catalog Number:

AG27626

GenBank Accession Number:

BC005839

GeneID (NCBI):

10272

UNIPROT ID:

O95633

Full Name:

folliculin-like 3 (secreted glycoprotein)

Calculated MW:

263 aa, 28 kDa

Observed MW:

28-33 kDa

Purification Method:

Antigen affinity purification

Recommended Dilutions:

WB 1:500-1:1000

IHC 1:250-1:1000

Applications

Tested Applications:

WB, IHC, ELISA

Species Specificity:

human, rat

Note-IHC: suggested antigen retrieval with TE buffer pH 9.0; (*) Alternatively, antigen retrieval may be performed with citrate buffer pH 6.0

Positive Controls:

WB: human placenta tissue, HeLa cells

IHC: human urothelial carcinoma tissue, rat kidney tissue, rat testis tissue

Background Information

Follistatin-like 3 (FSTL3) is a highly conserved 27-39 kDa monomeric glycoprotein belonging to the follistatin protein family and it is primarily expressed in the placenta as well as in the testis, heart, adipose tissue, and pancreas. It is an extracellular inhibitor of the transforming growth factor beta (TGF- β) family ligands, including activin, myostatin, and bone morphogenetic proteins.

Storage

Storage:

Store at -20°C. Stable for one year after shipment.

Storage Buffer:

PBS with 0.02% sodium azide and 50% glycerol pH 7.3.

Aliquoting is unnecessary for -20°C storage

For technical support and original validation data for this product please contact:

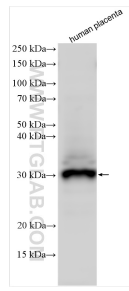
T: 4006900926

E: Proteintech-CN@ptglab.com

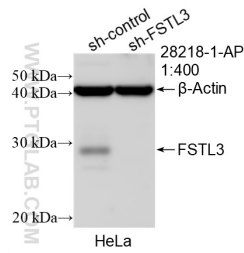
W: ptgcn.com

This product is exclusively available under Proteintech Group brand and is not available to purchase from any other manufacturer.

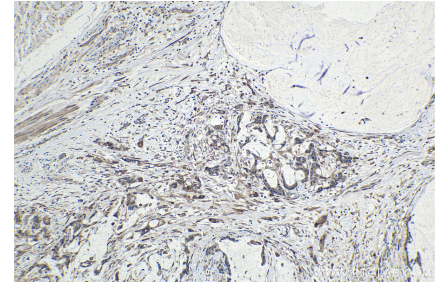
Selected Validation Data



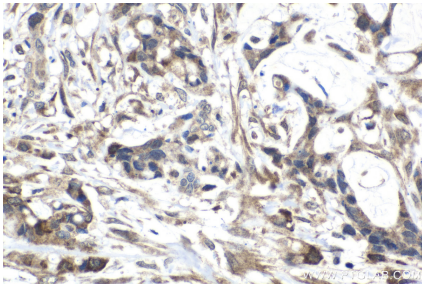
Human placenta tissues were subjected to SDS PAGE followed by western blot with 28218-1-AP (FSTL3 antibody) at dilution of 1:800 incubated at room temperature for 1.5 hours.



WB result of FSTL3 antibody (28218-1-AP; 1:400; incubated at room temperature for 1.5 hours) with sh-Control and sh-FSTL3 transfected HeLa cells.



Immunohistochemical analysis of paraffin-embedded human urothelial carcinoma tissue slide using 28218-1-AP (FSTL3 antibody) at dilution of 1:500 (under 10x lens). Heat mediated antigen retrieval with Tris-EDTA buffer (pH 9.0).



Immunohistochemical analysis of paraffin-embedded human urothelial carcinoma tissue slide using 28218-1-AP (FSTL3 antibody) at dilution of 1:500 (under 40x lens). Heat mediated antigen retrieval with Tris-EDTA buffer (pH 9.0).