

For Research Use Only

BCAM Polyclonal antibody

Catalog Number: 28222-1-AP



Basic Information

Catalog Number:

28222-1-AP

Size:

400 µg/ml

Source:

Rabbit

Isotype:

IgG

Immunogen Catalog Number:

AG28181

GenBank Accession Number:

BC050450

GeneID (NCBI):

4059

UNIPROT ID:

P50895

Full Name:

basal cell adhesion molecule
(Lutheran blood group)

Calculated MW:

67 kDa

Observed MW:

67-80 kDa

Purification Method:

Antigen affinity purification

Recommended Dilutions:

WB 1:1000-1:4000

Applications

Tested Applications:

WB, ELISA

Species Specificity:

Human

Positive Controls:

WB: A431 cells, HT-29 cells, human placenta tissue

Background Information

BCAM (Lutheran/basal cell-adhesion molecule, a glycoprotein) belongs to the immunoglobulin superfamily which contains both Lu blood group and BCAM tumor-associated antigens. The significance of Lu/BCAM on tumorigenesis has been increasingly recognized. Lu/BCAM is involved in cell-cell adhesion and migration in skin tumor (PMID: 11121140, PMID: 10728810). Proteomics analysis suggests that BCAM might be a potential biomarker for pancreatic cancer (PMID: 19199705).

Storage

Storage:

Store at -20°C. Stable for one year after shipment.

Storage Buffer:

PBS with 0.02% sodium azide and 50% glycerol pH 7.3.

Aliquoting is unnecessary for -20°C storage

For technical support and original validation data for this product please contact:

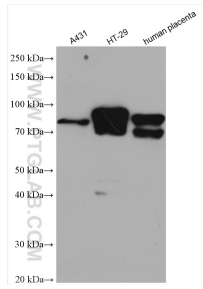
T: 4006900926

E: Proteintech-CN@ptglab.com

W: ptgcn.com

This product is exclusively available under Proteintech Group brand and is not available to purchase from any other manufacturer.

Selected Validation Data



Various lysates were subjected to SDS PAGE followed by western blot with 28222-1-AP (BCAM antibody) at dilution of 1:2000 incubated at room temperature for 1.5 hours.