

For Research Use Only

# Mouse p21 Polyclonal antibody, PBS Only

Catalog Number: 28248-1-PBS



## Basic Information

Catalog Number:

28248-1-PBS

Size:

1 mg/ml

Source:

Rabbit

Isotype:

IgG

Immunogen Catalog Number:

AG28394

GenBank Accession Number:

NM\_001111099

GeneID (NCBI):

12575

UNIPROT ID:

P39689

Full Name:

cyclin-dependent kinase inhibitor 1A (P21)

Calculated MW:

18 kDa

Observed MW:

18 kDa

Purification Method:

Antigen affinity purification

## Applications

Tested Applications:

WB, IF/ICC, Indirect ELISA

Species Specificity:

mouse, rat

## Background Information

CDKN1A (p21, CIP1, WAF1) is a cyclin-dependent kinase inhibitor. CDKN1A binds to and inhibits the activity of cyclin-CDK2 or -CDK4 complexes, and thus functions as a regulator of cell cycle progression at the G1 phase. The expression of CDKN1A is induced by wild-type but not mutant p53 protein, through which CDKN1A mediates the p53-dependent cell cycle G1 phase arrest in response to a variety of stress stimuli. CDKN1A can interact with proliferating cell nuclear antigen (PCNA), and plays a regulatory role in S phase DNA replication and DNA damage repair. CDKN1A was reported to be specifically cleaved by CASP3-like caspases, which thus leads to a dramatic activation of CDK2, and may be instrumental in the execution of apoptosis following caspase activation.

## Storage

Storage:

Store at -80°C.

The product is shipped with ice packs. Upon receipt, store it immediately at -80°C

Storage Buffer:

PBS Only

For technical support and original validation data for this product please contact:

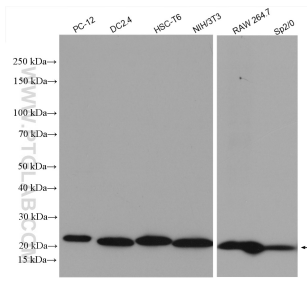
T: 4006900926

E: [Proteintech-CN@ptglab.com](mailto:Proteintech-CN@ptglab.com)

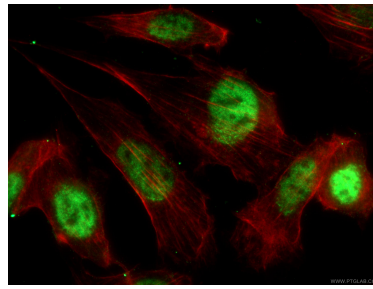
W: [ptgcn.com](http://ptgcn.com)

This product is exclusively available under Proteintech Group brand and is not available to purchase from any other manufacturer.

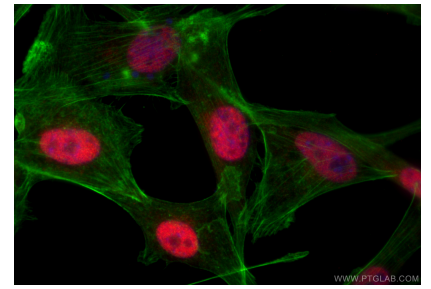
## Selected Validation Data



Various lysates were subjected to SDS PAGE followed by western blot with 28248-1-AP (p21 antibody) at dilution of 1:1000 incubated at room temperature for 1.5 hours. This data was developed using the same antibody clone with 28248-1-PBS in a different storage buffer formulation.



Immunofluorescent analysis of (-20°C Ethanol) fixed NIH/3T3 cells using 28248-1-AP (p21 antibody), at dilution of 1:200 and CoraLite®488-Conjugated AffiniPure Goat Anti-Rabbit IgG(H+L). F-actin is stained using CL555-phalloidin (red). This data was developed using the same antibody clone with 28248-1-PBS in a different storage buffer formulation.



Immunofluorescent analysis of (4% PFA) fixed NIH/3T3 cells using p21 antibody (28248-1-AP) at dilution of 1:200 and CoraLite®594-Conjugated Goat Anti-Rabbit IgG(H+L) (SA00013-4), CL488-phalloidin (green). This data was developed using the same antibody clone with 28248-1-PBS in a different storage buffer formulation.