

For Research Use Only

# Calmodulin 1/2/3 Polyclonal antibody



Catalog Number: 28270-1-AP

## Basic Information

**Catalog Number:**

28270-1-AP

**Size:**

1200 µg/ml

**Source:**

Rabbit

**Isotype:**

IgG

**Immunogen Catalog Number:**

AG28000

**GenBank Accession Number:**

BC006464

**GeneID (NCBI):**

805

**UNIPROT ID:**

P62158

**Full Name:**

calmodulin 2 (phosphorylase kinase, delta)

**Calculated MW:**

17 kDa

**Observed MW:**

17-22 kDa

**Purification Method:**

Antigen affinity purification

**Recommended Dilutions:**

WB 1:500-1:2000

IHC 1:50-1:500

IF 1:50-1:500

## Applications

**Tested Applications:**

IF-Fro, IHC, WB, ELISA

**Species Specificity:**

Human, mouse, rat

**Note-IHC: suggested antigen retrieval with *TE buffer pH 9.0*; (\*) Alternatively, antigen retrieval may be performed with *citrate buffer pH 6.0***

**Positive Controls:**

**WB:** mouse skeletal muscle tissue, rat skeletal muscle tissue

**IHC:** rat brain tissue, mouse brain tissue, mouse skeletal muscle tissue

**IF:** HeLa cells,

## Background Information

Calmodulin is the most widely distributed and most versatile member of a family of calcium-binding proteins which probably serve as receptors for the Ca<sup>2+</sup> signal. Through the regulation of a wide variety of intracellular enzymes, calmodulin plays a key role in many physiological processes (PMID: 6313166).

## Storage

**Storage:**

Store at -20°C. Stable for one year after shipment.

**Storage Buffer:**

PBS with 0.02% sodium azide and 50% glycerol pH 7.3.

Aliquoting is unnecessary for -20°C storage

For technical support and original validation data for this product please contact:

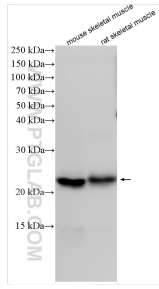
T: 4006900926

E: Proteintech-CN@ptglab.com

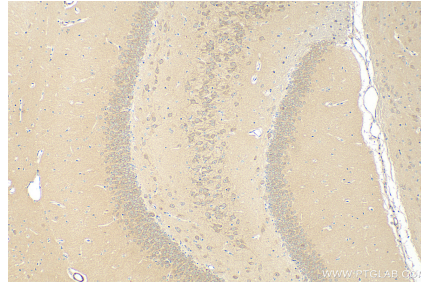
W: ptgcn.com

**This product is exclusively available under Proteintech Group brand and is not available to purchase from any other manufacturer.**

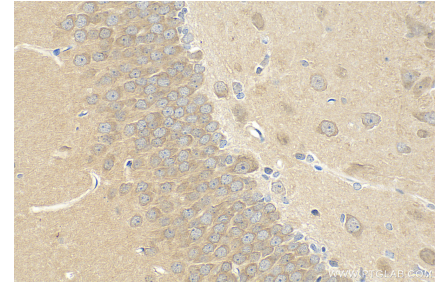
## Selected Validation Data



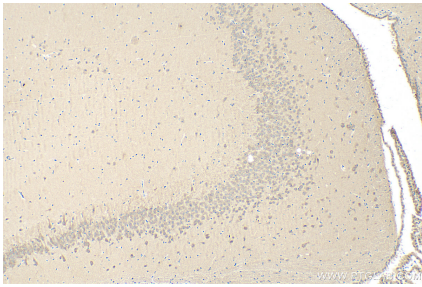
Various lysates were subjected to SDS PAGE followed by western blot with 28270-1-AP (Calmodulin 1/2/3 antibody) at dilution of 1:1000 incubated at room temperature for 1.5 hours.



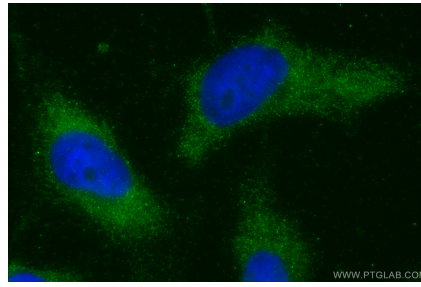
Immunohistochemical analysis of paraffin-embedded rat brain tissue slide using 28270-1-AP (Calmodulin 1/2/3 antibody) at dilution of 1:200 (under 10x lens). Heat mediated antigen retrieval with Tris-EDTA buffer (pH 9.0).



Immunohistochemical analysis of paraffin-embedded rat brain tissue slide using 28270-1-AP (Calmodulin 1/2/3 antibody) at dilution of 1:200 (under 40x lens). Heat mediated antigen retrieval with Tris-EDTA buffer (pH 9.0).



Immunohistochemical analysis of paraffin-embedded mouse brain tissue slide using 28270-1-AP (Calmodulin 1/2/3 antibody) at dilution of 1:200 (under 10x lens). Heat mediated antigen retrieval with Tris-EDTA buffer (pH 9.0).



Immunofluorescent analysis of (-20°C Ethanol) fixed HeLa cells using Calmodulin 1/2/3 antibody (28270-1-AP) at dilution of 1:200 and Coralite@488-Conjugated AffiniPure Goat Anti-Rabbit IgG(H+L).