

For Research Use Only

GFRAL Polyclonal antibody

Catalog Number: 28335-1-AP



Basic Information

Catalog Number: 28335-1-AP	GenBank Accession Number: NM_207410	Purification Method: Antigen affinity purification
Size: 800 µg/ml	GeneID (NCBI): 389400	Recommended Dilutions: WB 1:500-1:2000
Source: Rabbit	Full Name: GDNF family receptor alpha like	
Isotype: IgG	Calculated MW: 45 aa	
Immunogen Catalog Number: AG28504	Observed MW: 45-60 kDa	

Applications

Tested Applications: WB, ELISA	Positive Controls: WB : mouse cerebellum tissue, rat brain tissue
Species Specificity: human, mouse, rat	

Background Information

GFRAL (GDNF family receptor alpha-like), also called C6orf144, is the brainstem-restricted receptor for GDF15 hormone, which triggers an aversive response, characterized by nausea, vomiting, and/or loss of appetite in response to various stresses (PMID: 28846097, 28846098, 28846099, 28953886, 36630958). The GDF15-GFRAL signal induces expression of genes involved in metabolism, such as lipid metabolism in adipose tissues (PMID: 32661391). GFRAL is a single-pass membrane protein, and localizes to the plasma membrane. It is mainly expressed in the hindbrain, and its mainstream molecular weight is 45-60 kd.

Storage

Storage:
Store at -20°C. Stable for one year after shipment.
Storage Buffer:
PBS with 0.02% sodium azide and 50% glycerol pH 7.3.
Aliquoting is unnecessary for -20°C storage

For technical support and original validation data for this product please contact:

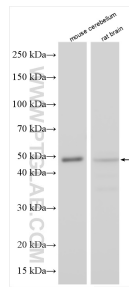
T: 4006900926

E: Proteintech-CN@ptglab.com

W: ptgcn.com

This product is exclusively available under Proteintech Group brand and is not available to purchase from any other manufacturer.

Selected Validation Data



Various lysates were subjected to SDS PAGE followed by western blot with 28335-1-AP (GFRA1 antibody) at dilution of 1:1000 incubated at room temperature for 1.5 hours.