

For Research Use Only

# CARD14 Polyclonal antibody

Catalog Number: 28373-1-AP



## Basic Information

Catalog Number:

28373-1-AP

Size:

600 µg/ml

Source:

Rabbit

Isotype:

IgG

Immunogen Catalog Number:

AG28969

GenBank Accession Number:

BC018142

GeneID (NCBI):

79092

UNIPROT ID:

Q9BXL6

Full Name:

caspase recruitment domain family,  
member 14

Calculated MW:

113 kDa

Observed MW:

110-140 kDa

Purification Method:

Antigen affinity purification

Recommended Dilutions:

WB 1:500-1:2000

## Applications

Tested Applications:

WB, ELISA

Species Specificity:

Human

Positive Controls:

WB : EC109 cells,

## Background Information

CARD14, also known as CARMA2, is closely related to CARD9, CARD10, and CARD11, which upon activation, each form an oligomeric CBM signaling complex with B - cell Lymphoma 10 (BCL10) and mucosa - associated lymphoid tissue lymphoma translocation protein 1 (MALT1). It is predominantly expressed in epithelial cells of esophagus, skin, and mucosal tissues, although some isoforms were also shown to be expressed in hematopoietic cell lines. (PMID: 36009554, PMID: 32343482)

## Storage

Storage:

Store at -20°C. Stable for one year after shipment.

Storage Buffer:

PBS with 0.02% sodium azide and 50% glycerol pH 7.3.

Aliquoting is unnecessary for -20°C storage

For technical support and original validation data for this product please contact:

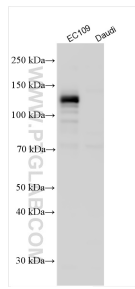
T: 4006900926

E: [Proteintech-CN@ptglab.com](mailto:Proteintech-CN@ptglab.com)

W: [ptgcn.com](http://ptgcn.com)

This product is exclusively available under Proteintech Group brand and is not available to purchase from any other manufacturer.

## Selected Validation Data



Various lysates were subjected to SDS PAGE followed by western blot with 28373-1-AP (CARD14 antibody) at dilution of 1:1000 incubated at room temperature for 1.5 hours. Daudi cells were used as a negative control.