

For Research Use Only

# Integrin beta-6 Polyclonal antibody



Catalog Number: 28378-1-AP

2 Publications

## Basic Information

<b>Catalog Number:</b> 28378-1-AP	<b>GenBank Accession Number:</b> BC121178	<b>Purification Method:</b> Antigen affinity purification
<b>Size:</b> 1000 µg/ml	<b>GeneID (NCBI):</b> 3694	<b>Recommended Dilutions:</b> WB 1:500-1:2000 IHC 1:50-1:500
<b>Source:</b> Rabbit	<b>UNIPROT ID:</b> P18564	
<b>Isotype:</b> IgG	<b>Full Name:</b> integrin, beta 6	
<b>Immunogen Catalog Number:</b> AG29002	<b>Calculated MW:</b> 788 aa, 86 kDa	
	<b>Observed MW:</b> 97 kDa	

## Applications

<b>Tested Applications:</b> IHC, WB, ELISA	<b>Positive Controls:</b> WB : A431 cells, IHC : mouse lung tissue,
<b>Cited Applications:</b> WB, IHC	
<b>Species Specificity:</b> Human, Mouse	
<b>Cited Species:</b> human	
<b>Note-IHC: suggested antigen retrieval with TE buffer pH 9.0; (*) Alternatively, antigen retrieval may be performed with citrate buffer pH 6.0</b>	

## Background Information

ITGB6 belongs to the integrin beta chain family. ITGB6 is a receptor for fibronectin and cytotactin. It recognizes the sequence R-G-D in its ligands. Internalisation of integrin alpha-V/beta-6 via clathrin-mediated endocytosis promotes carcinoma cell invasion.

## Notable Publications

Author	Pubmed ID	Journal	Application
Junjian Yu	38344200	Front Oncol	IHC
Xiang Feng	38205211	Transl Lung Cancer Res	WB,IHC

## Storage

**Storage:**  
Store at -20°C. Stable for one year after shipment.  
**Storage Buffer:**  
PBS with 0.02% sodium azide and 50% glycerol pH 7.3.  
Aliquoting is unnecessary for -20°C storage

For technical support and original validation data for this product please contact:

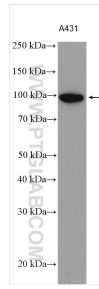
T: 4006900926

E: Proteintech-CN@ptglab.com

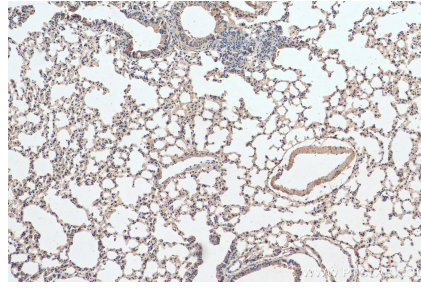
W: ptgcn.com

This product is exclusively available under Proteintech Group brand and is not available to purchase from any other manufacturer.

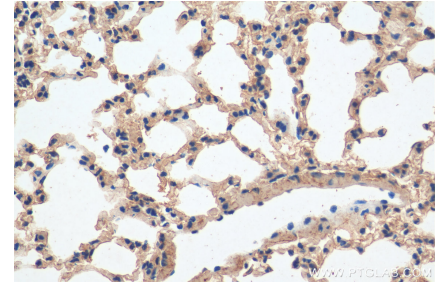
## Selected Validation Data



A431 cells were subjected to SDS PAGE followed by western blot with 28378-1-AP (Integrin beta-6 antibody) at dilution of 1:1000 incubated at room temperature for 1.5 hours.



Immunohistochemical analysis of paraffin-embedded mouse lung tissue slide using 28378-1-AP (Integrin beta-6 antibody) at dilution of 1:200 (under 10x lens). Heat mediated antigen retrieval with Tris-EDTA buffer (pH 9.0).



Immunohistochemical analysis of paraffin-embedded mouse lung tissue slide using 28378-1-AP (Integrin beta-6 antibody) at dilution of 1:200 (under 40x lens). Heat mediated antigen retrieval with Tris-EDTA buffer (pH 9.0).