

For Research Use Only

# SEMA4C Polyclonal antibody

Catalog Number: 28402-1-AP **1 Publications**



## Basic Information

<b>Catalog Number:</b> 28402-1-AP	<b>GenBank Accession Number:</b> BC109104	<b>Purification Method:</b> Antigen affinity purification
<b>Size:</b> 900 µg/ml	<b>GeneID (NCBI):</b> 54910	<b>Recommended Dilutions:</b> WB 1:1000-1:4000 IHC 1:50-1:500
<b>Source:</b> Rabbit	<b>UNIPROT ID:</b> Q9C0C4	
<b>Isotype:</b> IgG	<b>Full Name:</b> sema domain, immunoglobulin domain (Ig), transmembrane domain (TM) and short cytoplasmic domain, (semaphorin) 4C	
<b>Immunogen Catalog Number:</b> AG29143	<b>Calculated MW:</b> 833 aa, 93 kDa	
	<b>Observed MW:</b> 93 kDa	

## Applications

<b>Tested Applications:</b> IHC, WB, ELISA	<b>Positive Controls:</b> WB : fetal human brain tissue, mouse brain tissue, rat brain tissue IHC : human ovary tumor tissue, human stomach cancer tissue
<b>Cited Applications:</b> WB	
<b>Species Specificity:</b> Human, mouse, rat	
<b>Cited Species:</b> human	
<b>Note-IHC: suggested antigen retrieval with TE buffer pH 9.0; (*) Alternatively, antigen retrieval may be performed with citrate buffer pH 6.0</b>	

## Background Information

SEMA4C is a member of transmembrane semaphorin proteins which regulate axonal guidance in the developing nervous system. Furthermore, studies have demonstrated that sema4C was also implicated in biological events outside the nervous system, such as cell migration, tumor development, and terminal myogenic differentiation (PMID: 36010604). SEMA4C is highly expressed in breast, lung, cervical, and liver cancers. SEMA4C is involved in oncogenic signaling and is a potential therapeutic target for invasive breast cancer, hepatocellular carcinoma, glioma, and osteosarcoma (PMID: 33177246).

## Notable Publications

Author	Pubmed ID	Journal	Application
Siyuan Ma	39018715	Mutat Res	WB

## Storage

**Storage:**  
Store at -20°C. Stable for one year after shipment.  
**Storage Buffer:**  
PBS with 0.02% sodium azide and 50% glycerol pH 7.3.  
Aliquoting is unnecessary for -20°C storage

For technical support and original validation data for this product please contact:

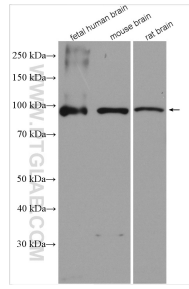
T: 4006900926

E: [Proteintech-CN@ptglab.com](mailto:Proteintech-CN@ptglab.com)

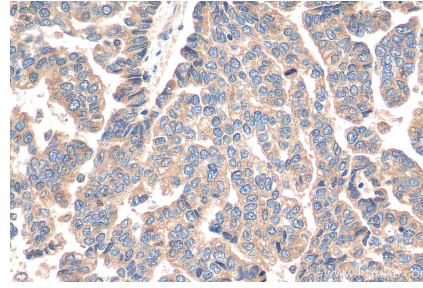
W: [ptgcn.com](http://ptgcn.com)

**This product is exclusively available under Proteintech Group brand and is not available to purchase from any other manufacturer.**

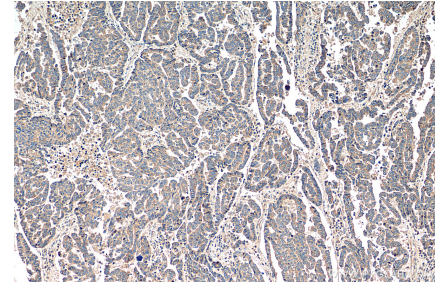
## Selected Validation Data



Various lysates were subjected to SDS PAGE followed by western blot with 28402-1-AP (SEMA4C antibody) at dilution of 1:2000 incubated at room temperature for 1.5 hours.



Immunohistochemical analysis of paraffin-embedded human ovary tumor tissue slide using 28402-1-AP (SEMA4C antibody) at dilution of 1:200 (under 40x lens). Heat mediated antigen retrieval with Tris-EDTA buffer (pH 9.0).



Immunohistochemical analysis of paraffin-embedded human ovary tumor tissue slide using 28402-1-AP (SEMA4C antibody) at dilution of 1:200 (under 10x lens). Heat mediated antigen retrieval with Tris-EDTA buffer (pH 9.0).