

For Research Use Only

KMT2C Polyclonal antibody

Catalog Number: 28437-1-AP **4 Publications**



Basic Information

Catalog Number: 28437-1-AP	GenBank Accession Number: NM_170606	Purification Method: Antigen affinity purification
Size: 500 ug/ml	GeneID (NCBI): 58508	Recommended Dilutions: WB 1:500-1:1000 IHC 1:200-1:800
Source: Rabbit	UNIPROT ID: Q8NEZ4	
Isotype: IgG	Full Name: myeloid/Lymphoid or mixed-Lineage leukemia 3	
Immunogen Catalog Number: AG28875	Calculated MW: 541 kDa	
	Observed MW: 541kDa, 269 kDa	

Applications

Tested Applications: WB, IHC, ELISA	Positive Controls: WB : K-562 cells, IHC : human ovary cancer tissue,
Cited Applications: WB, IF, CoIP, ChIP	
Species Specificity: human	
Cited Species: human	

Note-IHC: suggested antigen retrieval with TE buffer pH 9.0; (*) Alternatively, antigen retrieval may be performed with citrate buffer pH 6.0

Background Information

Lysine (K)-specific methyltransferase 2C (KMT2C, also known as MLL3) belongs to the mixed-lineage leukemia (MLL) family of histone methyltransferases which methylate the histone 3 tail at lysine 4 (H3K4) as part of the complex proteins associated with Set 1 (COMPASS) complex. Although originally identified as oncogenic fusions in leukemia, genome-wide mutation studies have revealed frequent, presumably loss-of-function, mutations in various members of the MLL family, including MLL2/KMT2B, MLL3/KMT2C, and MLL4/KMT2D in a variety of malignancies, particularly solid tumors. Mechanistic studies of KMT2C in normal cells have focused primarily on its role in enhancer regulation by deposition of H3K4me1 marks.

Notable Publications

Author	Pubmed ID	Journal	Application
Juan-Juan Li	34999393	Int Immunopharmacol	WB
Tian Tian	38649452	Nat Chem Biol	WB
Mingchuang Sun	37705061	Adv Sci (Weinh)	WB,IF,CoIP

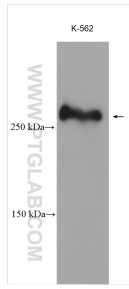
Storage

Storage:
Store at -20°C. Stable for one year after shipment.
Storage Buffer:
PBS with 0.02% sodium azide and 50% glycerol pH 7.3.
Aliquoting is unnecessary for -20°C storage

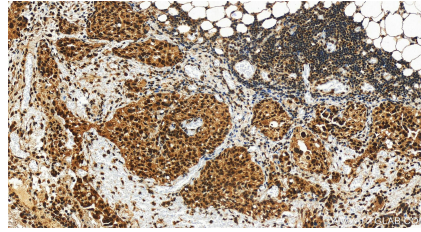
For technical support and original validation data for this product please contact:
T: 4006900926 E: Proteintech-CN@ptglab.com W: ptgcn.com

This product is exclusively available under Proteintech Group brand and is not available to purchase from any other manufacturer.

Selected Validation Data



K-562 cells were subjected to SDS PAGE followed by western blot with 28437-1-AP (KMT2C antibody) at dilution of 1:500 incubated at room temperature for 1.5 hours.



Immunohistochemical analysis of paraffin-embedded human ovary cancer tissue slide using 28437-1-AP (KMT2C antibody) at dilution of 1:400 (under 20x lens). Heat mediated antigen retrieval with Tris-EDTA buffer (pH 9.0).