

For Research Use Only

SGK1 Polyclonal antibody, PBS Only

Catalog Number: 28454-1-PBS

Featured Product



Basic Information

Catalog Number:

28454-1-PBS

Size:

1 mg/ml

Source:

Rabbit

Isotype:

IgG

Immunogen Catalog Number:

AG29420

GenBank Accession Number:

BC001263

GeneID (NCBI):

6446

UNIPROT ID:

O00141

Full Name:

serum/glucocorticoid regulated kinase 1

Calculated MW:

431 aa, 49 kDa

Observed MW:

42-50 kDa

Purification Method:

Antigen affinity purification

Applications

Tested Applications:

WB, IHC, IF/ICC, Indirect ELISA

Species Specificity:

human, mouse

Background Information

Serum- and glucocorticoid-induced kinase 1 (SGK1), also named as SGK, is a S/T protein kinase that belongs to the AGC (cAMP-dependent, cGMP-dependent, and protein kinase C) kinase family. It is expressed in many cell types and participates in numerous cellular processes and it is ubiquitinated and degraded at the ER membrane (PMID: 16847254). The N-terminal motif of SGK1 is critical for its ubiquitination and degradation (PMID: 16817852). SGK and Akt are likely to phosphorylate related substrates, as they share a similar consensus phosphorylation site (RXXRXS/T) (PMID: 11154281). It has 5 isoforms produced by alternative promoter usage and alternative splicing.

Storage

Storage:

Store at -80°C.

The product is shipped with ice packs. Upon receipt, store it immediately at -80°C

Storage Buffer:

PBS Only

For technical support and original validation data for this product please contact:

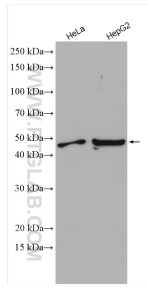
T: 4006900926

E: Proteintech-CN@ptglab.com

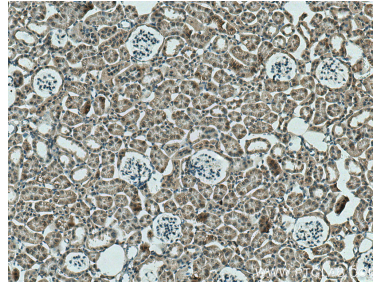
W: ptgcn.com

This product is exclusively available under Proteintech Group brand and is not available to purchase from any other manufacturer.

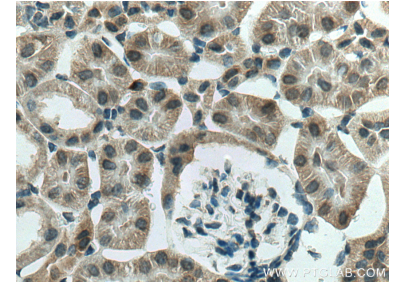
Selected Validation Data



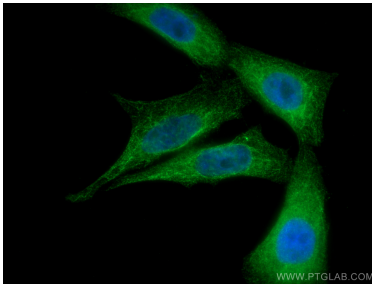
Various lysates were subjected to SDS PAGE followed by western blot with 28454-1-AP (SGK1 antibody) at dilution of 1:600 incubated at room temperature for 1.5 hours. This data was developed using the same antibody clone with 28454-1-PBS in a different storage buffer formulation.



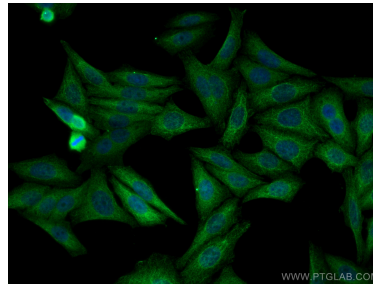
Immunohistochemical analysis of paraffin-embedded mouse kidney tissue slide using 28454-1-AP (SGK1 antibody) at dilution of 1:200 (under 10x lens). Heat mediated antigen retrieval with Tris-EDTA buffer (pH 9.0). This data was developed using the same antibody clone with 28454-1-PBS in a different storage buffer formulation.



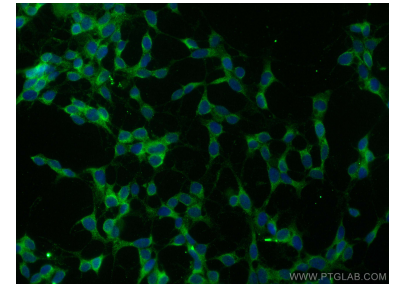
Immunohistochemical analysis of paraffin-embedded mouse kidney tissue slide using 28454-1-AP (SGK1 antibody) at dilution of 1:200 (under 40x lens). Heat mediated antigen retrieval with Tris-EDTA buffer (pH 9.0). This data was developed using the same antibody clone with 28454-1-PBS in a different storage buffer formulation.



Immunofluorescent analysis of (4% PFA) fixed HepG2 cells using SGK1 antibody (28454-1-AP) at dilution of 1:400 and CoraLite@488-Conjugated AffiniPure Goat Anti-Rabbit IgG(H+L). This data was developed using the same antibody clone with 28454-1-PBS in a different storage buffer formulation.



Immunofluorescent analysis of (4% PFA) fixed HepG2 cells using SGK1 antibody (28454-1-AP) at dilution of 1:400 and CoraLite@488-Conjugated AffiniPure Goat Anti-Rabbit IgG(H+L). This data was developed using the same antibody clone with 28454-1-PBS in a different storage buffer formulation.



Immunofluorescent analysis of (4% PFA) fixed SH-SY5Y cells using SGK1 antibody (28454-1-AP) at dilution of 1:200 and CoraLite@488-Conjugated AffiniPure Goat Anti-Rabbit IgG(H+L) (SA00013-2). This data was developed using the same antibody clone with 28454-1-PBS in a different storage buffer formulation.