

For Research Use Only

FLNC Polyclonal antibody

Catalog Number: 28492-1-AP **1 Publications**



Basic Information

Catalog Number: 28492-1-AP	GenBank Accession Number: NM_001458	Purification Method: Antigen affinity purification
Size: 300 µg/ml	GeneID (NCBI): 2318	Recommended Dilutions: WB 1:500-1:2000
Source: Rabbit	UNIPROT ID: Q14315	
Isotype: IgG	Full Name: filamin C, gamma (actin binding protein 280)	
Immunogen Catalog Number: AG29328	Calculated MW: 291 kDa	
	Observed MW: 280-300 kDa	

Applications

Tested Applications: WB, ELISA	Positive Controls: WB : SGC-7901 cells,
Cited Applications: WB	
Species Specificity: Human	
Cited Species: human	

Background Information

Filamin C (FLNC; also known as γ -FLN; ABP-L; FLN2), a muscle-specific filamin and a large actin-cross-linking protein. Human filamins are ~280 kDa homodimers, each monomer consisting of an N-terminal actin-binding domain followed by 24 immunoglobulin (Ig)-like domains (d1 to d24), the last of which mediates dimerization. FLNC is specifically expressed in cardiomyocytes and skeletal myocytes and is involved in the maintenance of structural integrity. High filamin C associated with better prognosis of prostate cancer, leukemia and breast cancer patients. (PMID: 25577646, PMID: 30867563, PMID: 31131323)

Notable Publications

Author	Pubmed ID	Journal	Application
Ilenia Matera	38003580	Int J Mol Sci	WB

Storage

Storage:
Store at -20°C. Stable for one year after shipment.
Storage Buffer:
PBS with 0.02% sodium azide and 50% glycerol pH 7.3.
Aliquoting is unnecessary for -20°C storage

For technical support and original validation data for this product please contact:

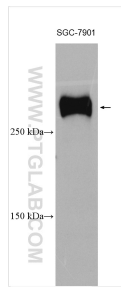
T: 4006900926

E: Proteintech-CN@ptglab.com

W: ptgcn.com

This product is exclusively available under Proteintech Group brand and is not available to purchase from any other manufacturer.

Selected Validation Data



SGC-7901 cells were subjected to SDS PAGE followed by western blot with 28492-1-AP (filamin-c antibody) at dilution of 1:1000 incubated at room temperature for 1.5 hours.