

For Research Use Only

IGF1 Polyclonal antibody

Catalog Number: 28530-1-AP **22 Publications**



Basic Information

Catalog Number: 28530-1-AP	GenBank Accession Number: NM_001111285.2	Purification Method: Antigen affinity purification
Size: 550 µg/ml	GeneID (NCBI): 3479	Recommended Dilutions: IHC 1:50-1:500
Source: Rabbit	UNIPROT ID: P05019	
Isotype: IgG	Full Name: insulin-like growth factor 1 (somatomedin C)	
Immunogen Catalog Number: AG29197	Calculated MW: 22 kDa	

Applications

Tested Applications: IHC, ELISA	Positive Controls: IHC: human liver tissue, mouse kidney tissue, mouse liver tissue
Cited Applications: WB, IF, IHC, Cell treatment	
Species Specificity: Human, mouse	
Cited Species: human, rat, mouse	
Note-IHC: suggested antigen retrieval with TE buffer pH 9.0; (*) Alternatively, antigen retrieval may be performed with citrate buffer pH 6.0	

Background Information

IGF1, also named as IBP1, MGF, IGF-IA, and Somatomedin-C, belongs to the INS family. IGF1 is structurally and functionally related to INS but has a much higher growth-promoting activity. Altered expression or mutation of IGF-1 is associated with several human disorders, including type I diabetes and various forms of cancer. Defects in IGF1 are the cause of INS-like growth factor I deficiency (IGF1 deficiency) which is an autosomal recessive disorder characterized by growth retardation, sensorineural deafness, and mental retardation.

Notable Publications

Author	Pubmed ID	Journal	Application
Ying-Ying Li	36160409	Front Pharmacol	WB
Lifeng Wang	36160014	Front Genet	IHC
Jianjian Zhang	34707090	Cell Death Discov	WB

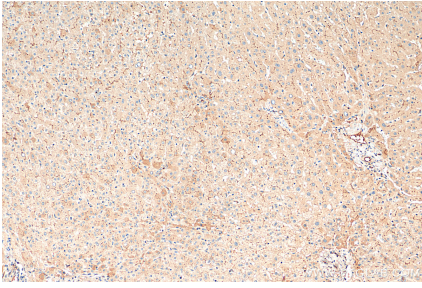
Storage

Storage:
Store at -20°C. Stable for one year after shipment.
Storage Buffer:
PBS with 0.02% sodium azide and 50% glycerol pH 7.3.
Aliquoting is unnecessary for -20°C storage

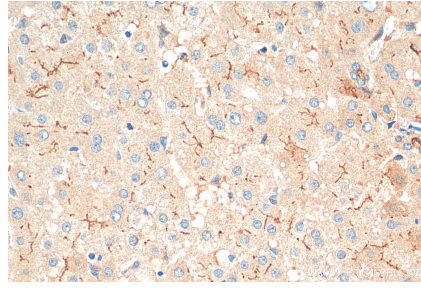
For technical support and original validation data for this product please contact:
T: 4006900926 E: Proteintech-CN@ptglab.com W: ptgcn.com

This product is exclusively available under Proteintech Group brand and is not available to purchase from any other manufacturer.

Selected Validation Data



Immunohistochemical analysis of paraffin-embedded human liver tissue slide using 28530-1-AP (IGF1 antibody) at dilution of 1:200 (under 10x lens). Heat mediated antigen retrieval with Tris-EDTA buffer (pH 9.0).



Immunohistochemical analysis of paraffin-embedded human liver tissue slide using 28530-1-AP (IGF1 antibody) at dilution of 1:200 (under 40x lens). Heat mediated antigen retrieval with Tris-EDTA buffer (pH 9.0).