

For Research Use Only

# PTPLAD1 Polyclonal antibody

Catalog Number: 28572-1-AP

2 Publications



## Basic Information

Catalog Number:

28572-1-AP

Size:

700 µg/ml

Source:

Rabbit

Isotype:

IgG

Immunogen Catalog Number:

AG29557

GenBank Accession Number:

NM\_016395

GeneID (NCBI):

51495

UNIPROT ID:

Q9P035

Full Name:

protein tyrosine phosphatase-like A domain containing 1

Calculated MW:

43 kDa

Observed MW:

43 kDa

Purification Method:

Antigen affinity purification

Recommended Dilutions:

WB 1:500-1:2000

IHC 1:50-1:500

## Applications

Tested Applications:

IHC, WB, ELISA

Cited Applications:

WB

Species Specificity:

Human

Cited Species:

human

**Note-IHC: suggested antigen retrieval with TE buffer pH 9.0; (\*) Alternatively, antigen retrieval may be performed with citrate buffer pH 6.0**

Positive Controls:

WB : human placenta tissue,

IHC : human breast cancer tissue, human liver cancer tissue

## Background Information

### Notable Publications

Author	Pubmed ID	Journal	Application
Qibing Li	38793585	Viruses	WB
Zi-Jia Huang	38617530	Int J Biol Sci	WB

## Storage

Storage:

Store at -20°C. Stable for one year after shipment.

Storage Buffer:

PBS with 0.02% sodium azide and 50% glycerol pH 7.3.

Aliquoting is unnecessary for -20°C storage

For technical support and original validation data for this product please contact:

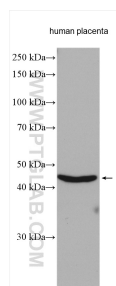
T: 4006900926

E: Proteintech-CN@ptglab.com

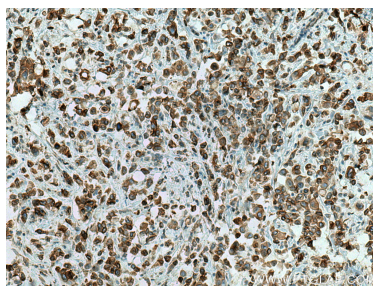
W: ptgcn.com

This product is exclusively available under Proteintech Group brand and is not available to purchase from any other manufacturer.

## Selected Validation Data



Human placenta tissue were subjected to SDS PAGE followed by western blot with 28572-1-AP (PTPLAD1 antibody) at dilution of 1:1000 incubated at room temperature for 1.5 hours.



Immunohistochemical analysis of paraffin-embedded human breast cancer tissue slide using 28572-1-AP (PTPLAD1 antibody) at dilution of 1:200 (under 10x lens). Heat mediated antigen retrieval with Tris-EDTA buffer (pH 9.0).