

For Research Use Only

# APOL3 Polyclonal antibody

Catalog Number: 28591-1-AP



## Basic Information

<b>Catalog Number:</b> 28591-1-AP	<b>GenBank Accession Number:</b> NM_145640	<b>Purification Method:</b> Antigen affinity purification
<b>Size:</b> 350 µg/ml	<b>GeneID (NCBI):</b> 80833	<b>Recommended Dilutions:</b> WB 1:500-1:1000
<b>Source:</b> Rabbit	<b>UNIPROT ID:</b> O95236	
<b>Isotype:</b> IgG	<b>Full Name:</b> apolipoprotein L, 3	
<b>Immunogen Catalog Number:</b> AG29687	<b>Calculated MW:</b> 44 kDa	
	<b>Observed MW:</b> 44 kDa	

## Applications

<b>Tested Applications:</b> WB, ELISA	<b>Positive Controls:</b> WB : A549 cells, BxPC-3 cells, HCT 116 cells
<b>Species Specificity:</b> Human	

## Background Information

Apolipoprotein L3 (APOL3) is a member of the apolipoprotein L gene family, and it is present in a cluster with other family members on chromosome 22. APOL3 is localized in the cytoplasm and plays a central role in cholesterol transport, affecting the movement of lipids, including cholesterol, and allowing the binding of lipids to organelles.

## Storage

**Storage:**  
Store at -20°C. Stable for one year after shipment.  
**Storage Buffer:**  
PBS with 0.02% sodium azide and 50% glycerol pH 7.3.  
Aliquoting is unnecessary for -20°C storage

For technical support and original validation data for this product please contact:

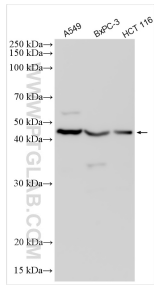
T: 4006900926

E: [Proteintech-CN@ptglab.com](mailto:Proteintech-CN@ptglab.com)

W: [ptgcn.com](http://ptgcn.com)

This product is exclusively available under Proteintech Group brand and is not available to purchase from any other manufacturer.

## Selected Validation Data



Various lysates were subjected to SDS PAGE followed by western blot with 28591-1-AP (APOL3 antibody) at dilution of 1:500 incubated at room temperature for 1.5 hours.