

For Research Use Only

# Claudin 1 Polyclonal antibody

Catalog Number: 28674-1-AP

Featured Product

146 Publications



## Basic Information

### Catalog Number:

28674-1-AP

### Concentration:

550 ug/ml

### Source:

Rabbit

### Isotype:

IgG

### Immunogen Catalog Number:

AG29269

### GenBank Accession Number:

BC012471

### GeneID (NCBI):

9076

### UNIPROT ID:

O95832

### Full Name:

claudin 1

### Calculated MW:

211 aa, 23 kDa

### Observed MW:

20-23 kDa

### Purification Method:

Antigen affinity purification

### Recommended Dilutions:

WB: 1:1000-1:6000

IHC: 1:500-1:2000

IF/ICC: 1:50-1:500

## Applications

### Tested Applications:

WB, IHC, IF/ICC, ELISA

### Cited Applications:

WB, IHC, IF

### Species Specificity:

human, mouse, rat

### Cited Species:

human, mouse, rat, pig, canine, bovine, sheep, sus  
scrofa domestica (domestic pig)

**Note-IHC: suggested antigen retrieval with  
TE buffer pH 9.0; (\*) Alternatively, antigen  
retrieval may be performed with citrate  
buffer pH 6.0**

### Positive Controls:

**WB**: A431 cells, mouse skin tissue, rat skin tissue,  
HepG2 cells

**IHC**: human colon cancer tissue, human skin cancer  
tissue, mouse colon tissue, mouse skin tissue

**IF/ICC**: HaCaT cells, HUVEC cells

## Background Information

Claudins are a family of proteins that are the most important components of tight junctions, where they establish the paracellular barrier that controls the flow of molecules in the intercellular space between the cells of an epithelium. 23 claudins have been identified. They are small (20-27 kilodalton (kDa)) proteins with similar structures. They have four transmembrane domains, with the N-terminus and the C-terminus in the cytoplasm. Claudin-1 is an integral membrane protein expressed primarily in keratinocytes and normal mammary epithelial cells. Claudin 1 forms tight junctions with other claudin proteins and plays an important role in the intestinal epithelial barrier.

## Notable Publications

Author	Pubmed ID	Journal	Application
Yingying Wang	36174863	Int J Biol Macromol	WB, IF
Zhen-Xing Wang	36235602	Nutrients	WB
Jianping Li	36240652	Biochem Biophys Res Commun	WB

## Storage

### Storage:

Store at -20°C. Stable for one year after shipment.

### Storage Buffer:

PBS with 0.02% sodium azide and 50% glycerol, pH7.3

Aliquoting is unnecessary for -20°C storage

For technical support and original validation data for this product please contact:

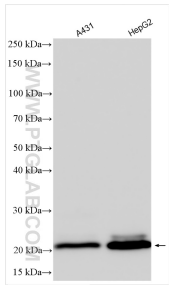
T: 4006900926

E: [Proteintech-CN@ptglab.com](mailto:Proteintech-CN@ptglab.com)

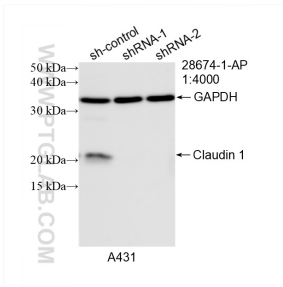
W: [ptgcn.com](http://ptgcn.com)

**This product is exclusively available under Proteintech Group brand and is not available to purchase from any other manufacturer.**

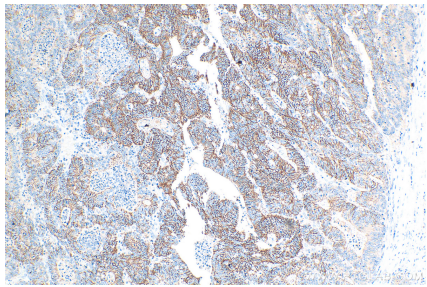
Selected Validation Data



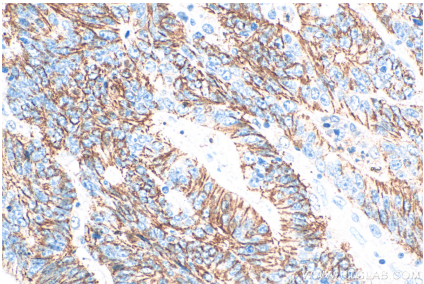
Various lysates were subjected to SDS PAGE followed by western blot with 28674-1-AP (Claudin 1 antibody) at dilution of 1:3000 incubated at room temperature for 1.5 hours.



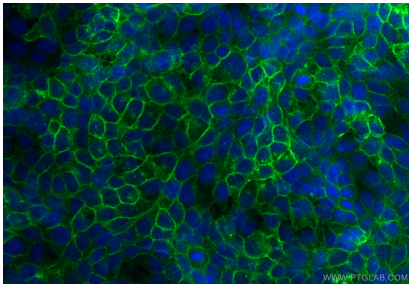
WB result of Claudin 1 antibody (28674-1-AP; 1:4000; incubated at room temperature for 1.5 hours) with sh-Control and sh-Claudin 1 transfected A431 cells.



Immunohistochemical analysis of paraffin-embedded human colon cancer tissue slide using 28674-1-AP (Claudin 1 antibody) at dilution of 1:1000 (under 10x lens). Heat mediated antigen retrieval with Tris-EDTA buffer (pH 9.0).



Immunohistochemical analysis of paraffin-embedded human colon cancer tissue slide using 28674-1-AP (Claudin 1 antibody) at dilution of 1:1000 (under 40x lens). Heat mediated antigen retrieval with Tris-EDTA buffer (pH 9.0).



Immunofluorescent analysis of (-20°C Methanol) fixed HaCaT cells using Claudin 1 antibody (28674-1-AP) at dilution of 1:200 and CoraLite®488-Conjugated Goat Anti-Rabbit IgG(H+L) (SA00013-2).