

For Research Use Only

Sam50 Polyclonal antibody

Catalog Number: 28679-1-AP **3 Publications**



Basic Information

Catalog Number: 28679-1-AP	GenBank Accession Number: BC007830	Purification Method: Antigen affinity purification
Size: 900 µg/ml	GeneID (NCBI): 25813	Recommended Dilutions: WB 1:2000-1:16000 IHC 1:50-1:500 IF 1:50-1:500
Source: Rabbit	UNIPROT ID: Q9Y512	
Isotype: IgG	Full Name: sorting and assembly machinery component 50 homolog (S. cerevisiae)	
Immunogen Catalog Number: AG29152	Calculated MW: 469 aa, 52 kDa	
	Observed MW: 52 kDa	

Applications

Tested Applications: IF/ICC, IHC, WB, ELISA	Positive Controls: WB : A431 cells, HeLa cells, HepG2 cells, mouse heart tissue, rat heart tissue IHC : human heart tissue, human liver cancer tissue IF : HeLa cells,
Cited Applications: WB, IP, IF	
Species Specificity: Human, Mouse, Rat	
Cited Species: rat, mouse	

Note-IHC: suggested antigen retrieval with TE buffer pH 9.0; (*) Alternatively, antigen retrieval may be performed with citrate buffer pH 6.0

Background Information

Sam50, encoded by the SAMM50 gene, is an essential protein of the mitochondrial outer membrane (OMM). It contains a beta-barrel domain conserved from bacteria to man (PMID: 14570913). Sam50 is a part of the sorting and assembly machinery (SAM) necessary for the assembly of beta-barrel proteins in the OMM (PMID: 22252321). It is crucial for maintaining mitochondrial shape, morphology of mitochondrial cristae, and assembly of the mitochondrial respiratory chain complexes (PMID: 26587038; 22252321; 25781180). Polymorphisms in the SAMM50 gene have been associated with development and progression of nonalcoholic fatty liver disease (PMID: 23535911).

Notable Publications

Author	Pubmed ID	Journal	Application
Ran Xu	34631840	Front Cardiovasc Med	IF
Yufei Zhou	38723737	Cell Signal	WB, IF, IP
Ting Li	38250156	Int J Biol Sci	WB

Storage

Storage:
Store at -20°C. Stable for one year after shipment.
Storage Buffer:
PBS with 0.02% sodium azide and 50% glycerol pH 7.3.
Aliquoting is unnecessary for -20°C storage

For technical support and original validation data for this product please contact:

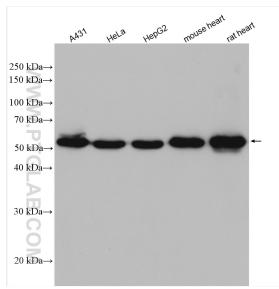
T: 4006900926

E: Proteintech-CN@ptglab.com

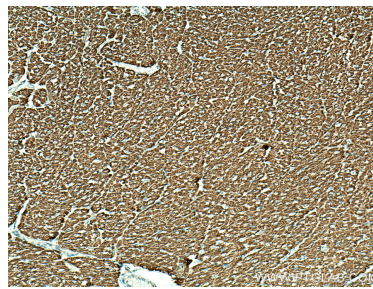
W: ptgcn.com

This product is exclusively available under Proteintech Group brand and is not available to purchase from any other manufacturer.

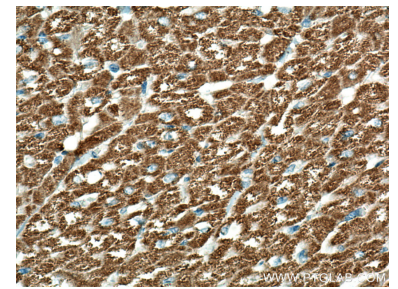
Selected Validation Data



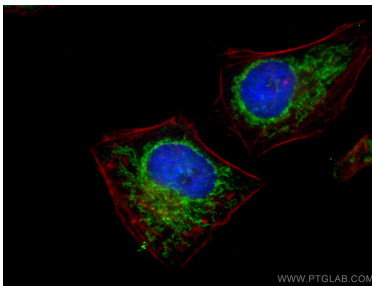
A431 cells were subjected to SDS PAGE followed by western blot with 28679-1-AP (SAMM50 antibody) at dilution of 1:8000 incubated at room temperature for 1.5 hours.



Immunohistochemical analysis of paraffin-embedded human heart tissue slide using 28679-1-AP (Sam50 antibody) at dilution of 1:200 (under 10x lens). Heat mediated antigen retrieval with Tris-EDTA buffer (pH 9.0).



Immunohistochemical analysis of paraffin-embedded human heart tissue slide using 28679-1-AP (Sam50 antibody) at dilution of 1:200 (under 40x lens). Heat mediated antigen retrieval with Tris-EDTA buffer (pH 9.0).



Immunofluorescent analysis of (4% PFA) fixed HeLa cells using 28679-1-AP (Sam50 antibody), at dilution of 1:200 and CoralLite@488-Conjugated AffiniPure Goat Anti-Rabbit IgG(H+L).