

For Research Use Only

SGLT2 Polyclonal antibody

Catalog Number: 28683-1-AP **1 Publications**



Basic Information

| | | |
|---|---|---|
| Catalog Number: 28683-1-AP | GenBank Accession Number: BC131542 | Purification Method: Antigen affinity purification |
| Size: 900 µg/ml | GeneID (NCBI): 6524 | Recommended Dilutions: WB 1:500-1:2000 IHC 1:50-1:500 IF-P 1:50-1:500 |
| Source: Rabbit | UNIPROT ID: P31639 | |
| Isotype: IgG | Full Name: solute carrier family 5 (sodium/glucose cotransporter), member 2 | |
| Immunogen Catalog Number: AG30120 | Calculated MW: 672 aa, 73 kDa | |
| | Observed MW: 73 kDa | |

Applications

| | |
|--|---|
| Tested Applications: IF-P, IHC, WB, ELISA | Positive Controls: WB : mouse kidney tissue, rat kidney tissue IHC : human kidney tissue, mouse kidney tissue IF-P : mouse kidney tissue, rat kidney tissue |
| Cited Applications: WB | |
| Species Specificity: Human, mouse, rat | |
| Cited Species: mouse | |
| Note-IHC: suggested antigen retrieval with TE buffer pH 9.0; (*) Alternatively, antigen retrieval may be performed with citrate buffer pH 6.0 | |

Background Information

Sodium-glucose cotransporter 2 (SGLT2), encoded by SLC5A2, utilizes the electrochemical sodium gradient to transport glucose against the cell's internal concentration gradient. Mainly expressed on brush border membrane (BBM) of epithelial cells in the early segment of the proximal tubule, SGLT2 mediates most of the glucose reabsorption by the kidney overall. Inhibition of SGLT2 could improve glucose homeostasis of diabetic patients, which has been considered as a novel strategy for diabetes treatment.

Notable Publications

| Author | Pubmed ID | Journal | Application |
|----------|-----------|-------------------|-------------|
| Sha Chen | 39046464 | Basic Res Cardiol | WB |

Storage

Storage:
Store at -20°C. Stable for one year after shipment.
Storage Buffer:
PBS with 0.02% sodium azide and 50% glycerol pH 7.3.
Aliquoting is unnecessary for -20°C storage

For technical support and original validation data for this product please contact:

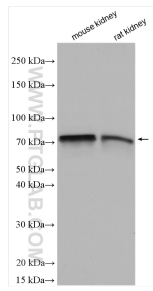
T: 4006900926

E: Proteintech-CN@ptglab.com

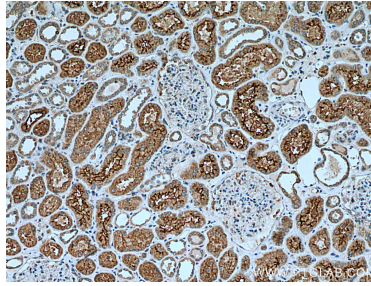
W: ptgcn.com

This product is exclusively available under Proteintech Group brand and is not available to purchase from any other manufacturer.

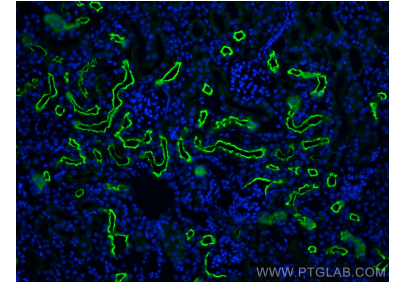
Selected Validation Data



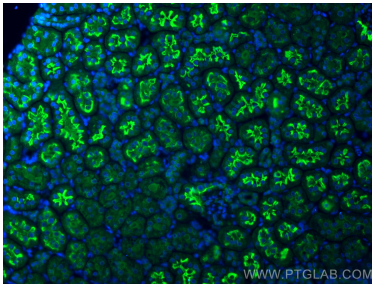
Various lysates were subjected to SDS PAGE followed by western blot with 28683-1-AP (SGLT2 antibody) at dilution of 1:1000 incubated at room temperature for 1.5 hours.



Immunohistochemical analysis of paraffin-embedded human kidney tissue slide using 28683-1-AP (SGLT2 antibody) at dilution of 1:200 (under 10x lens). Heat mediated antigen retrieval with Tris-EDTA buffer (pH 9.0).



Immunofluorescent analysis of (4% PFA) fixed mouse kidney tissue using SGLT2 antibody (28683-1-AP) at dilution of 1:200 and CoraLite®488-Conjugated AffiniPure Goat Anti-Rabbit IgG(H+L).



Immunofluorescent analysis of (4% PFA) fixed rat kidney tissue using SGLT2 antibody (28683-1-AP) at dilution of 1:200 and CoraLite®488-Conjugated AffiniPure Goat Anti-Rabbit IgG(H+L).