

For Research Use Only

# WWP1 Polyclonal antibody

Catalog Number: 28689-1-AP **1 Publications**



## Basic Information

<b>Catalog Number:</b> 28689-1-AP	<b>GenBank Accession Number:</b> BC036065	<b>Purification Method:</b> Antigen affinity purification
<b>Size:</b> 400 µg/ml	<b>GeneID (NCBI):</b> 11059	<b>Recommended Dilutions:</b> WB 1:500-1:1000 IHC 1:50-1:500
<b>Source:</b> Rabbit	<b>UNIPROT ID:</b> Q9H0M0	
<b>Isotype:</b> IgG	<b>Full Name:</b> WW domain containing E3 ubiquitin protein ligase 1	
<b>Immunogen Catalog Number:</b> AG30161	<b>Calculated MW:</b> 922 aa, 105 kDa	
	<b>Observed MW:</b> 95-105 kDa	

## Applications

<b>Tested Applications:</b> IHC, WB, ELISA	<b>Positive Controls:</b> WB : HepG2 cells, HeLa cells, MCF-7 cells, A431 cells
<b>Cited Applications:</b> WB	<b>IHC :</b> human breast cancer tissue, human liver cancer tissue
<b>Species Specificity:</b> Human	
<b>Cited Species:</b> human	

**Note-IHC: suggested antigen retrieval with TE buffer pH 9.0; (\*) Alternatively, antigen retrieval may be performed with citrate buffer pH 6.0**

## Background Information

WW domain-containing E3 ubiquitin protein ligase 1 (WWP1) is a multifunction protein containing an N-terminal C2 domain, four tandem WW domains for substrate binding, and a C-terminal catalytic HECT domain for ubiquitin transferring. It is also named as AIP5, Tiul1. WWP1 regulates a variety of cellular biological processes including protein trafficking and degradation, signaling, transcription, and viral budding. WWP1 has been implicated in several diseases, such as cancers, infectious diseases, neurological diseases, and aging (PMID:22051607). It has 6 isoforms produced by alternative splicing.

## Notable Publications

Author	Pubmed ID	Journal	Application
Chunlong Huang	38457248	Cancer Med	WB

## Storage

**Storage:**  
Store at -20°C. Stable for one year after shipment.  
**Storage Buffer:**  
PBS with 0.02% sodium azide and 50% glycerol pH 7.3.  
Aliquoting is unnecessary for -20°C storage

For technical support and original validation data for this product please contact:

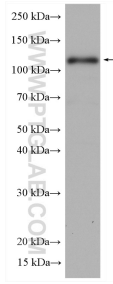
T: 4006900926

E: [Proteintech-CN@ptglab.com](mailto:Proteintech-CN@ptglab.com)

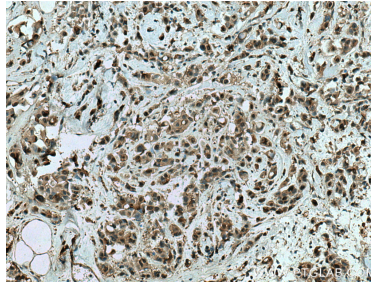
W: [ptgcn.com](http://ptgcn.com)

**This product is exclusively available under Proteintech Group brand and is not available to purchase from any other manufacturer.**

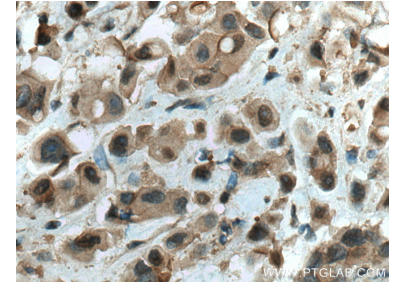
## Selected Validation Data



HepG2 cells were subjected to SDS PAGE followed by western blot with 28689-1-AP (WWP1 antibody) at dilution of 1:800 incubated at room temperature for 1.5 hours.



Immunohistochemical analysis of paraffin-embedded human breast cancer tissue slide using 28689-1-AP (WWP1 antibody) at dilution of 1:200 (under 10x lens). Heat mediated antigen retrieval with Tris-EDTA buffer (pH 9.0).



Immunohistochemical analysis of paraffin-embedded human breast cancer tissue slide using 28689-1-AP (WWP1 antibody) at dilution of 1:200 (under 40x lens). Heat mediated antigen retrieval with Tris-EDTA buffer (pH 9.0).