

For Research Use Only

LTBP2 Polyclonal antibody

Catalog Number: 28824-1-AP



Basic Information

Catalog Number:

28824-1-AP

Size:

350 µg/ml

Source:

Rabbit

Isotype:

IgG

Immunogen Catalog Number:

AG29737

GenBank Accession Number:

BC078659

GeneID (NCBI):

4053

UNIPROT ID:

Q14767

Full Name:

latent transforming growth factor beta binding protein 2

Calculated MW:

1821 aa, 195 kDa

Observed MW:

260 kDa

Purification Method:

Antigen affinity purification

Recommended Dilutions:

WB 1:500-1:1000

Applications

Tested Applications:

WB, ELISA

Species Specificity:

Human

Positive Controls:

WB : human urine sample,

Background Information

LTBP2, an extracellular glycoprotein mapping to chromosome 14q24, belongs to a family of latent TGF- β binding proteins (LTBPs) that regulates a well-known growth factor, TGF- β . LTBP2 is an elastic fiber-associating protein whose function in elastogenesis is not clear, as a DANCEbinding Protein. (PMID: 17581631) It may play an integral structural role in elastic-fiber architectural organization and/or assembly. LTBP2 associates covalently with small latent TGF-beta complex via Repeat B and Repeat C. Defects in LTBP2 are the cause of primary congenital glaucoma type 3D (GLC3D). [MIM:613086] LTBP2 is a role in the structural stability of ciliary zonules, and growth and development of lens. (PMID: 20617341) LTBP2 null mutations in an autosomal recessive ocular syndrome with megalocornea, spherophakia, and secondary glaucoma (PMID: 20179738). LTBP2 is a biomarker of heart failure. LTBP2 has a molecular weight of 260 kDa (PMID: 20878956), and even larger molecular weights of 290 and 310 kDa were detected in tissue extracts. (PMID: 8524260)

Storage

Storage:

Store at -20°C. Stable for one year after shipment.

Storage Buffer:

PBS with 0.02% sodium azide and 50% glycerol pH 7.3.

Aliquoting is unnecessary for -20°C storage

For technical support and original validation data for this product please contact:

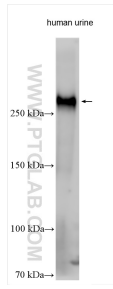
T: 4006900926

E: Proteintech-CN@ptglab.com

W: ptgcn.com

This product is exclusively available under Proteintech Group brand and is not available to purchase from any other manufacturer.

Selected Validation Data



Various lysates were subjected to SDS PAGE followed by western blot with 28824-1-AP (LTBP2 antibody) at dilution of 1:600 incubated at room temperature for 1.5 hours.