

For Research Use Only

# PCOLCE Polyclonal antibody

Catalog Number: 28826-1-AP



## Basic Information

<b>Catalog Number:</b> 28826-1-AP	<b>GenBank Accession Number:</b> BC000574	<b>Purification Method:</b> Antigen affinity purification
<b>Size:</b> 750 µg/ml	<b>GeneID (NCBI):</b> 5118	<b>Recommended Dilutions:</b> WB 1:500-1:3000
<b>Source:</b> Rabbit	<b>UNIPROT ID:</b> Q15113	
<b>Isotype:</b> IgG	<b>Full Name:</b> procollagen C-endopeptidase enhancer	
<b>Immunogen Catalog Number:</b> AG29719	<b>Calculated MW:</b> 48 kDa	
	<b>Observed MW:</b> 48-50 kDa	

## Applications

<b>Tested Applications:</b> WB, ELISA	<b>Positive Controls:</b> WB : human plasma,
<b>Species Specificity:</b> Human	

## Background Information

PCOLCE (Procollagen C-endopeptidase enhancer 1), also named as PCPE1, is a secreted glycoprotein that functions as a positive regulator of procollagen processing. The calculated molecular weight of PCOLCE is 48 kDa. PCOLCE binds to the C-terminal propeptide of type I procollagen and enhances procollagen C-proteinase activity. Procollagen C-proteinases have important roles in developmental processes and assembly of the extracellular matrix. It has been reported that the dysregulation of PCOLCE is involved in numerous diseases. For instance, the expression of PCOLCE positively correlates with muscle and liver fibrosis (PMID: 27458976). And PCOLCE was highly expressed in osteosarcoma and may play an important role in promoting the lung metastasis of osteosarcoma (PMID: 31285765).

## Storage

**Storage:**  
Store at -20°C. Stable for one year after shipment.  
**Storage Buffer:**  
PBS with 0.02% sodium azide and 50% glycerol pH 7.3.  
Aliquoting is unnecessary for -20°C storage

For technical support and original validation data for this product please contact:

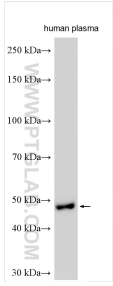
T: 4006900926

E: [Proteintech-CN@ptglab.com](mailto:Proteintech-CN@ptglab.com)

W: [ptgcn.com](http://ptgcn.com)

**This product is exclusively available under Proteintech Group brand and is not available to purchase from any other manufacturer.**

# Selected Validation Data



Various lysates were subjected to SDS PAGE followed by western blot with 28826-1-AP (PCOLCE antibody) at dilution of 1:1500 incubated at room temperature for 1.5 hours.